



Zhulin Temple and Pagoda Landscape Design

南澳阿德莱德竹林寺舍利塔场地景观设计

151 - 155 May Terrace Adelaide, SA, Australia 5013

Project: Zhulin Temple Landscape Design

Participant: Aaron Xiaohan Wang

Drawing: Site Analysis and Design Proposal

Site Photo



Introduction 场地介绍

Project history 项目历史

The SA Zhu-Lin Buddhist Association is a Buddhist temple located in the northern suburb of Adelaide, the capital of South Australia. The complex is about 10km from downtown and covers approximately 4 hectares.

The pagoda situated behind the temple is currently under construction. The pagoda has its origins from the Indian stupa, an ancient type of building commonly used to store sutras and sacred relics of the Buddha. The temple's pagoda will act as a resting place for the cremated ashes of devotees and their relatives. In front of the pagoda will be a large parking lot, providing a space for devotees to park their vehicles when visiting the temple. The design brief is to design a space that is situated between the pagoda and the parking lot.

The following Master Plan and Design Report have been prepared following a comprehensive review of the outcomes of both the brief and the site visit to Zhulin Temple.

竹林佛教协会是一座佛寺，位于南澳大利亚首都阿德莱德北郊。该建筑群距离市中心约10公里，占地约4公顷。在对竹林寺的现状和即将完成施工的舍利塔进行场地走访后，设计者准备了以下总体规划和设计报告。

Existing Conditions



Site Photo
Pagoda



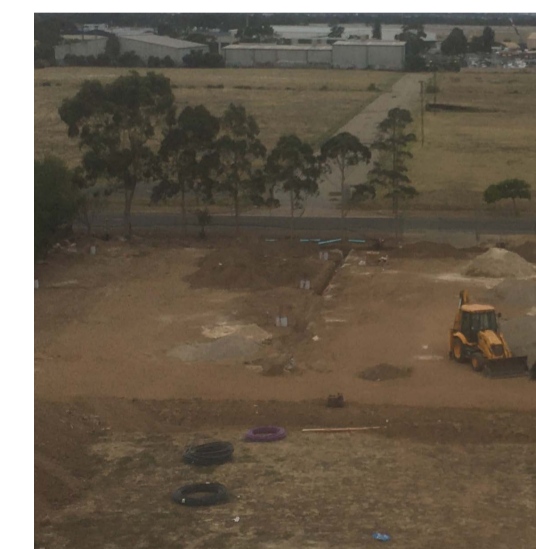
Site Photo
Looking South



Site Photo
Site Amenities



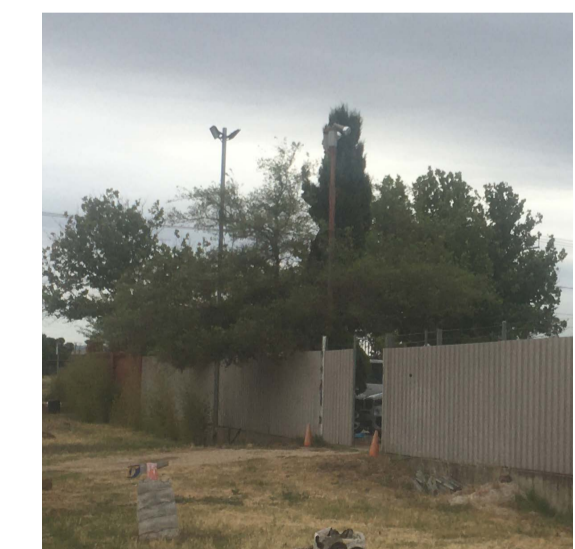
Site Photo
Site Amenities



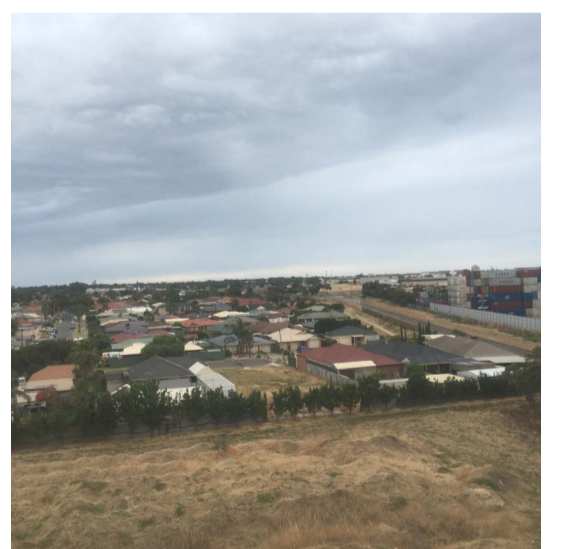
Site Photo
Aerial



Site Photo
Boundary



Site Photo
Existing Fence



Site Photo
Residential

Project: Zhulin Temple Landscape Design

Participant: Aaron Xiaohan Wang

Drawing: Site Analysis and Design Proposal

Himeji Garden



Vision 场地企划

To enhance peaceful and spiritual experiences for the Buddhist community whilst retain and delay stormwater flow on site.

增强佛教社区人群在场地内的精神体验，回收雨水和延缓场地的雨水径流。

Vision for the Zhulin temple landscape

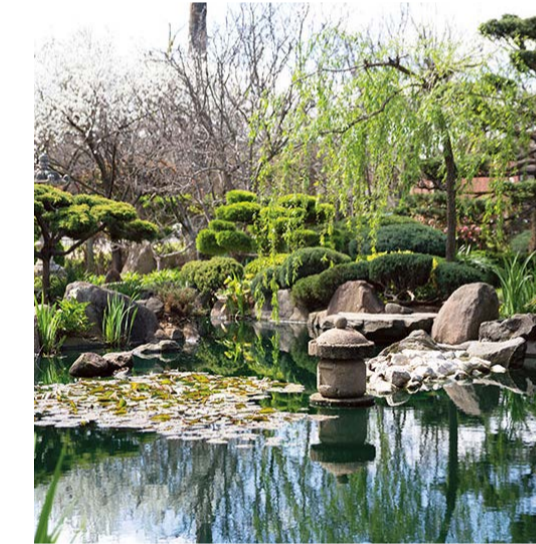
A vision for the landscape area for Zhulin Temple developed in consultation with the member of the elected group, community and monk elders.

案例参考

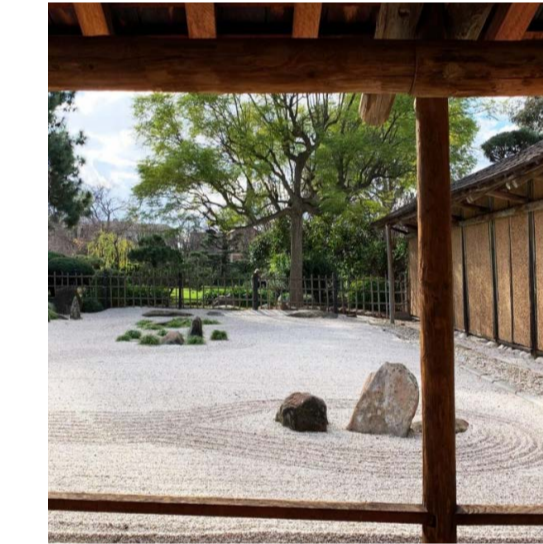
Vision 1
Adelaide Himeji Garden, Adelaide

Vision 2
Murchison Street Raingarden, Mansfield Park, Port Adelaide Enfield

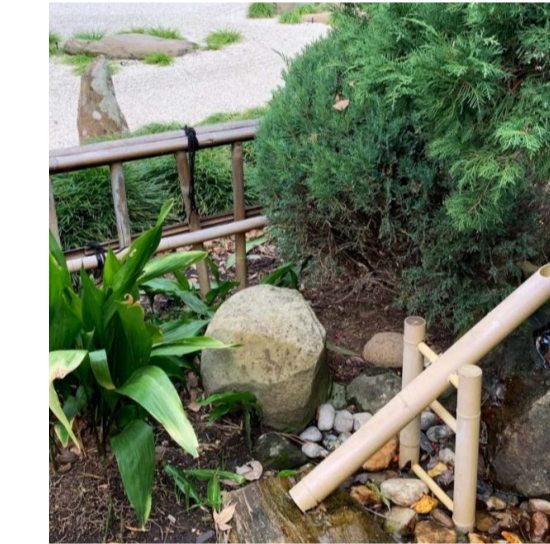
Precedent Images



Himeji Garden
Central Pond



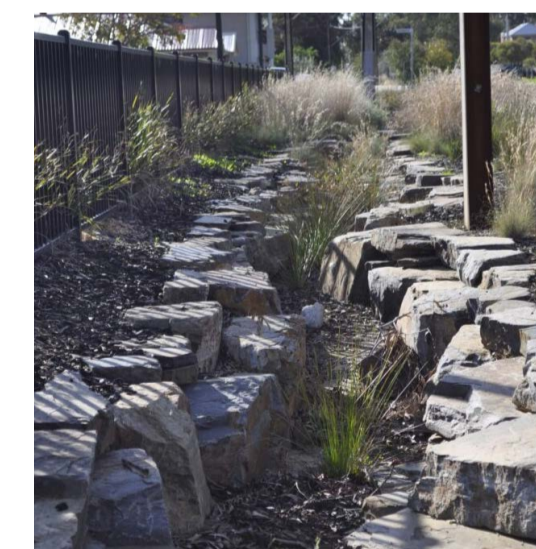
Himeji Garden
Zen Garden



Himeji Garden
Rainwater feature



Himeji Garden
Oriental styled feature



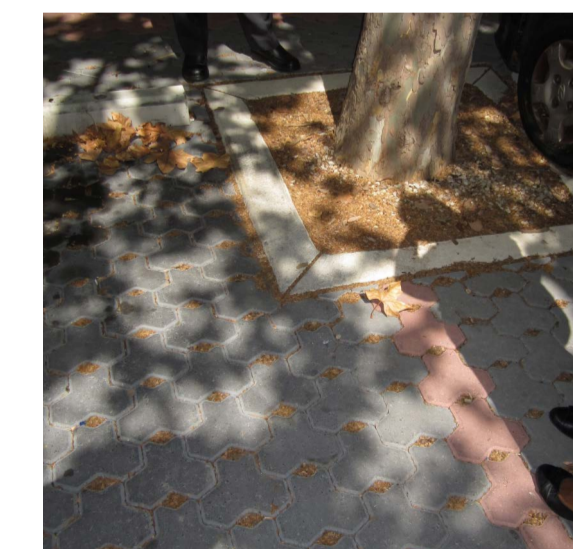
Murchison Street
Dry Creek



Murchison Street
Bio retention basin



Murchison Street
Native strappy grass



Old Treasury Lane
Permeable pavement

Project: Zhulin Temple Landscape Design
Participant: Aaron Xiaohan Wang
Drawing: Site Analysis and Design Proposal



The Zhulin Temple Landscape Design will:

1. Celebrate the existing temple and to-be-built pagoda
2. Reflect Buddhism spirituality and foster Zen atmosphere
3. Provide improved planting and opportunity for active and passive recreation
4. Retain, bio-filter and delay stormwater flow on site
5. Improve infiltration of rainwater to soil
6. Create oriental style of gardens from South Australian plant materials

竹林寺景观设计将:

1. 呼应现有的寺庙和即将建成的宝塔
2. 体现佛教精神，营造禅意氛围
3. 提供更多的种植和活动场地，进行多种的娱乐和精神认知活动
4. 保留，植物过滤和延迟雨水径流
5. 改善雨水对土壤的渗透
6. 用南澳大利亚的植物材料打造东方风格的花园

Project: Zhulin Temple Landscape Design

Participant: Aaron Xiaohan Wang

Drawing: Site Analysis and Design Proposal

Site Analysis 场地分析

Boundary

The SA Zhu-Lin Buddhist temple is situated in the city of Ottoway, which sits in the northwest of Adelaide, the land in the area of Port Adelaide Enfield council.

Land use

The site includes the existing temple along its carpark and landscape. With the construction of the pagoda, there is an opportunity to renew the landscape and the carpark in front of the temple and make space for a more impressive entrance.

The site adjoins some industrial sites and is in the zone that is divided by industrial and residential land use. A railway crosses parallel to the north boundary of the site. On the top right of the site there are two landfills as well. Opportunities for providing oasis and sheltered green areas for Buddhism spirituality is emphasized in the masterplan.

From the consultation undertaken several key aspects were identified as significant. These include **stormwater collection, accessibility, and cultural connection.**

边界

竹林佛寺坐落在奥托威市，它位于阿德莱德的西北部，阿德莱德港恩菲尔德理事会地区的土地。

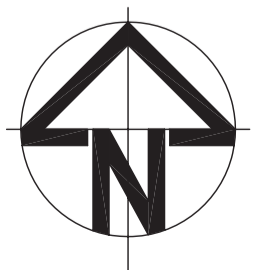
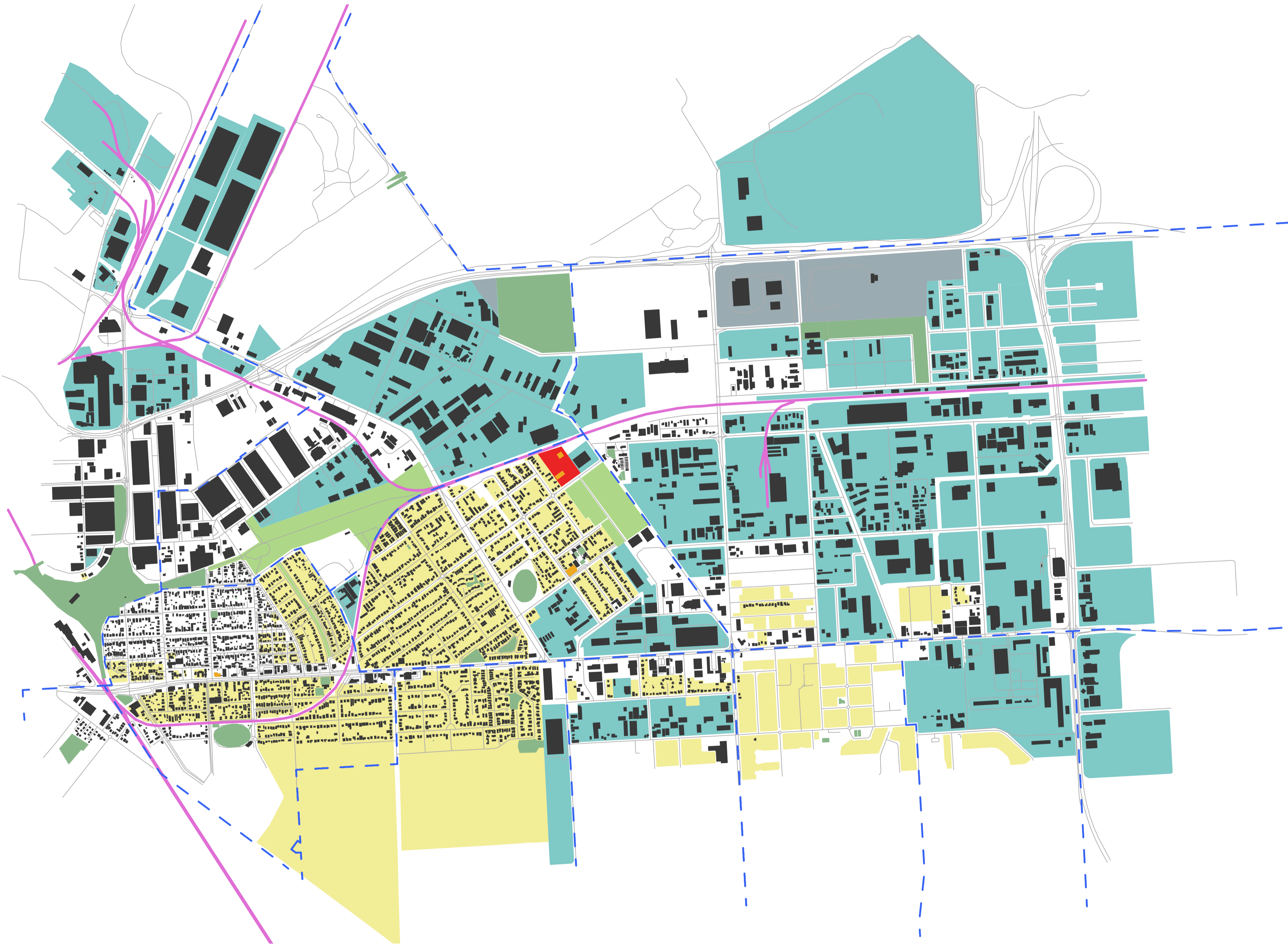
土地使用

该基地包括现有的寺庙沿其停车场和景观。随着宝塔的建设，有机会更新景观和寺庙前的停车场，并建造一个更令人印象深刻的入口景观。

该地块毗邻一些工业用地，位于工业用地和住宅用地划分的区域内。一条铁路与基地的北部边界平行。在该地点的右上角也有两个垃圾填埋场。体现佛教精神并提供绿洲和庇护绿地，是场地未来发展的可能。

从和建筑师和法师们进行的协商中，确定了几个重要方面。这些包括雨水收集、可达性和文化联系。

- Industrial Landuse
- Residential Landuse
- Leisure (Park & Reserve)
- Site
- Place of Worship
- Landfill
- Suburb Boundary
- Highway
- Railway





Site Analysis 场地分析

Stormwater

The flood map of the site shows the flood condition predicted once in 20 years, 50 years and 100 years. Some of the site will be drowned if once in 100 years. Hence there is need to provide solutions to the potential flooding threat.

The stormwater conduits and connections are spread out at the corner of Southeast area of the site and these areas around the conduits are also a potential flooding zone.

Accessibility

There is no compliant ramp for people with wheelchair, opportunities include providing access for the new pagoda and also the existing temple compliant to Australian standards. Also, there is a wall that bordered the existing temple and new developing area, and it will be a hinderance to the connection from new carpark to existing temple, so removal of the wall will be considered.

Cultural connection

The site locates in a land that is foreign to Buddhist beliefs and there are opportunities of introducing and experiencing Buddhism spirituality by creating an oriental styled landscape while using local materials. The pagoda is a sacred building and stores sutras and sacred relics while the temple is a place for communication and gathering. The potential of design could reflect the meaning of Buddhism to approach life and spread kindness and happiness among the local community and believers.

边界

该场地的洪水地图显示了预测的100年的洪水状况。场地内有些地方和附近每100年就会被雨洪淹没一次。因此，有必要为潜在的水浸威胁提供解决方案。

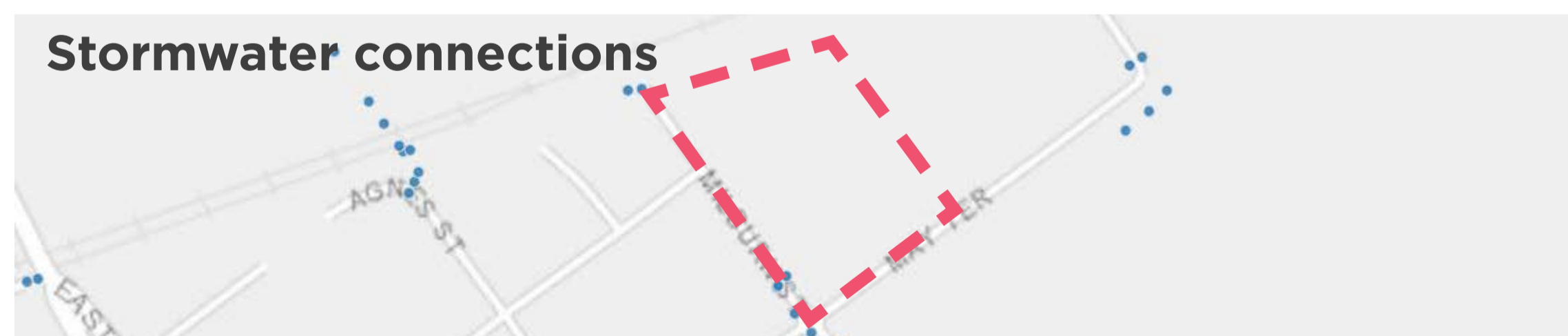
雨水管道及其连接点分布在场地的东南角，管道周围的区域也是潜在的洪泛区。

可访问性

没有适合坐轮椅的人的坡道，新宝塔和现有的寺庙都符合澳大利亚的标准。此外，在现有寺庙和新开发区域的边界有一堵墙，这将阻碍新停车场与现有寺庙的连接，因此需考虑拆除这堵墙提高可达性。

文化的联系

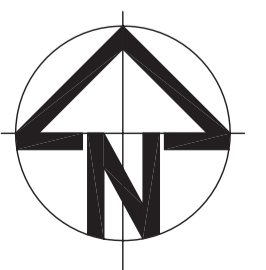
该项目位于一片与佛教信仰有不同信仰的土地上，在使用当地材料的同时，需要通过创造一个东方风格的景观来引入和体验佛教精神。宝塔是神圣的建筑，存放经书和圣物，而寺庙则是交流和聚会的场所。好的设计可以反映佛教的意义，并且在当地社区和信众中传播善良和幸福。



Project: Zhulin Temple Landscape Design

Participant: Aaron Xiaohan Wang

Drawing: Site Analysis and Design Proposal





Concept 设计概念

Purify – The idea of purification, both spiritually – to build an oasis in an industrial land and provide an asylum for people who wants to experience tranquillity and happiness and physically – through rain gardens to purify and retain stormwater.

'Not to do any evil; to cultivate good; to purify one's heart - this is the teaching of all the Buddhas.'

Although Buddhists value highly such virtues as loving kindness, humanity, patience and giving, perhaps they value wisdom and compassion most of all. The idea of ahimsa or harmlessness is very closely connected with compassion. The compassionate desire to cause no harm to all beings including animals, plants, and the world in general. In all things Buddhism places great stress on self-reliance and the Buddha himself told his followers not to believe without questioning, but to test it for themselves. Buddhism is also a very practical religion and aims at helping people to live their lives peacefully.

Buddhists also try to practice the Buddhist virtues actively in their everyday lives. The final goal of all Buddhist practice is to bring about that same awakening that the Buddha himself achieved through an active transformation of the heart and passions and the letting go of I.

净化，不仅是指佛家宗教精神上的净化，也指在工业土地上建立绿洲，为那些想要体验宁静和幸福的人提供庇护的空间，通过雨水花园净化和保留雨水。

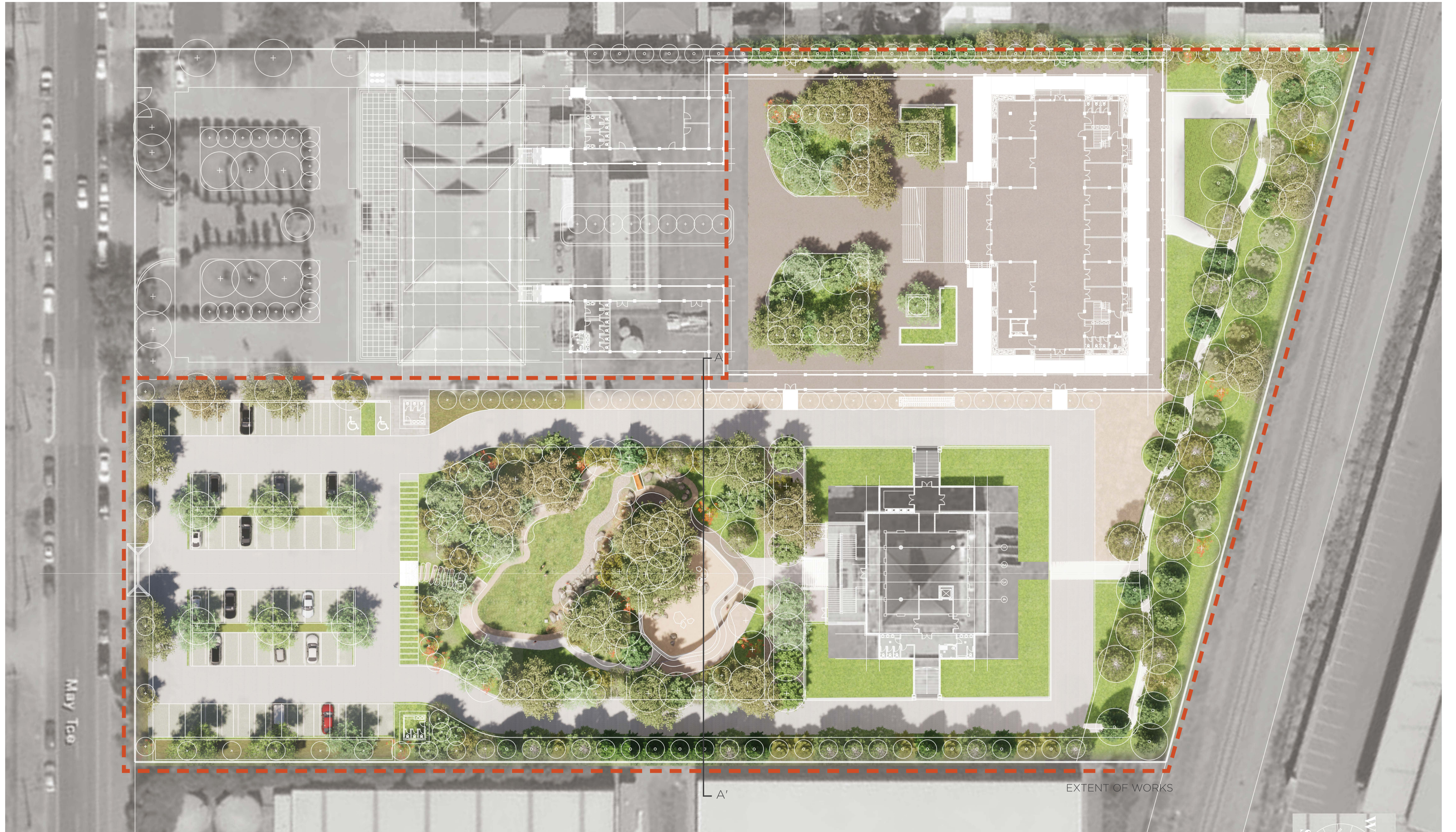
《维摩诘经》- “若菩萨欲得净土，当净其心，随其心净，则佛土净”。

Project: Zhulin Temple Landscape Design

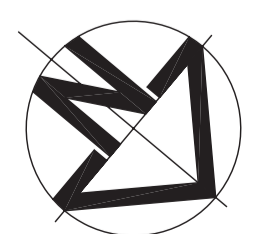
Participant: Aaron Xiaohan Wang

Drawing: Site Analysis and Design Proposal

Master Plan 总平面图



Project: Zhulin Temple Landscape Design
Participant: Aaron Xiaohan Wang
Drawing: Site Analysis and Design Proposal



1:300 A1
1:600 A3

Proposal

Key elements

- Create a central piece of landscape enhance the presence of the new pagoda
- Provide a formal shared way / footpath on either side of the driving lane.
- Create separate walking trail/pathway connecting features around the garden
- Create new shelters and Zen garden for relaxation
- New seating at shady area
- New veggie beds planted at both side of the new temple for monks to cultivate seedlings
- New topography at the entrance of the garden and also the back of pagoda
- Create a bio-retention dry creek and stone/concrete channel to retain/delay stormwater
- Improve access and allow an open place for gathering and fire exiting
-

创建一个中心景观，增强新宝塔的存在感

在行车道的两侧提供正式共用道路/行人路。

创建独立的步道/通道，连接花园周围的特色

创建新的庇护所和禅宗花园放松

阴凉区域的新座位

在新寺庙的两侧种了新的蔬菜床，供僧侣们种植幼苗

花园入口和宝塔后面的新地形

创建一个生物保留干燥小溪和石头/混凝土通道，以保留/延迟雨水

改善通道，并允许一个开放的地方收集和消防出口

Legend



Proposed Carpark
Permeable paving + asphalt



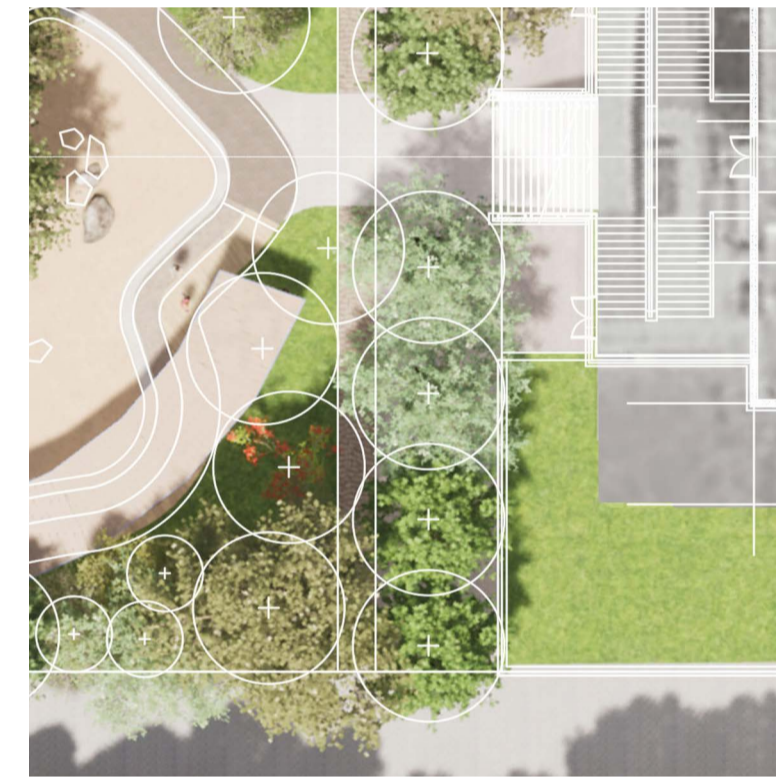
Entrance garden
Concrete steppers + mounds



Open Lawn + Dry creek
Bio-retention swale + Strappy grass



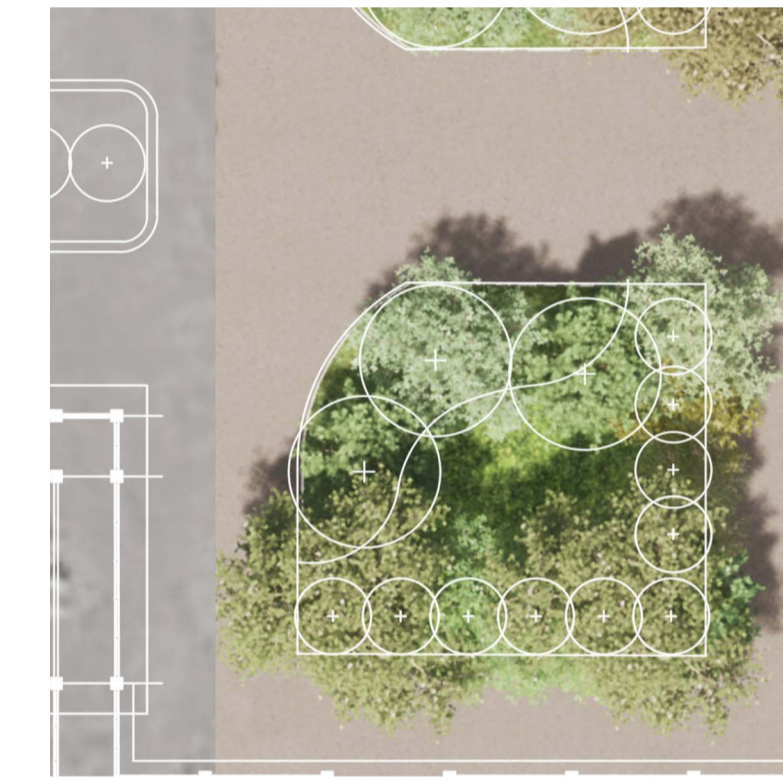
Deciduous forest + Zen garden
Raked gravel



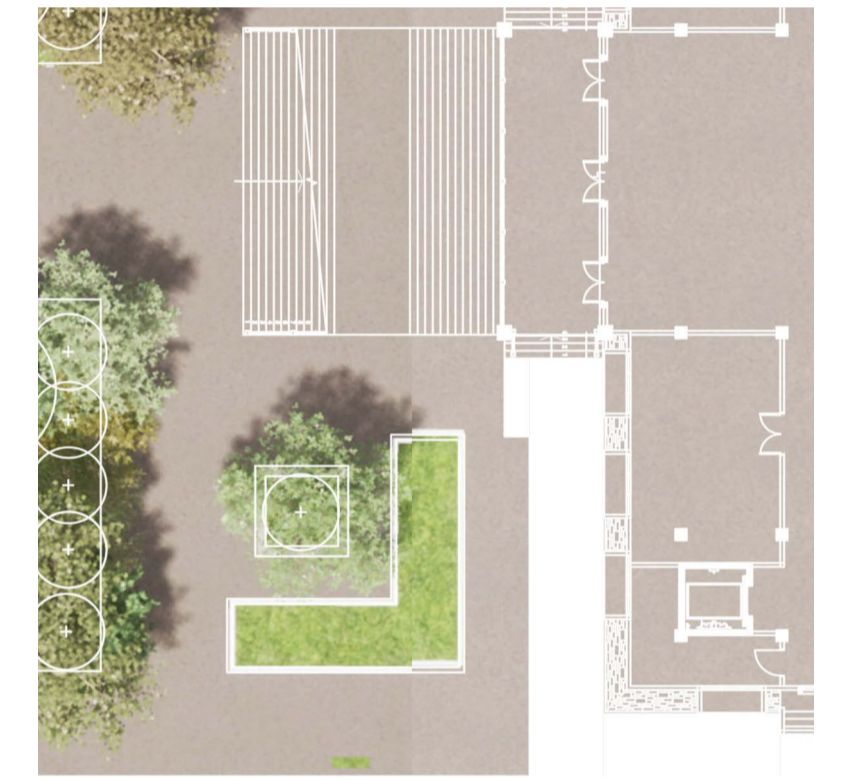
Entrance boulevard
Tree pits + Strata vault



Foot Bridge



Planting bed + brick paving



Raised Veggie bed + Garden bed
Timber Seating



Proposed Tree



Existing Tree



Scope of works

Project: Zhulin Temple Landscape Design

Participant: Aaron Xiaohan Wang

Drawing: Site Analysis and Design Proposal

Model + Renders

Aerial views



Project: Zhulin Temple Landscape Design

Participant: Aaron Xiaohan Wang

Drawing: Site Analysis and Design Proposal

Model + Renders

Aerial views



Project: Zhulin Temple Landscape Design

Participant: Aaron Xiaohan Wang

Drawing: Site Analysis and Design Proposal

Model + Renders

Aerial views



Project: Zhulin Temple Landscape Design

Participant: Aaron Xiaohan Wang

Drawing: Site Analysis and Design Proposal

Model + Renders

Zen Garden



Project: Zhulin Temple Landscape Design

Participant: Aaron Xiaohan Wang

Drawing: Site Analysis and Design Proposal

Model + Renders

Zen Garden



Project: Zhulin Temple Landscape Design

Participant: Aaron Xiaohan Wang

Drawing: Site Analysis and Design Proposal

Model + Renders

Zen Garden



Project: Zhulin Temple Landscape Design

Participant: Aaron Xiaohan Wang

Drawing: Site Analysis and Design Proposal

Model + Renders

Open Lawn + Bio swale



Project: Zhulin Temple Landscape Design

Participant: Aaron Xiaohan Wang

Drawing: Site Analysis and Design Proposal

Model + Renders

Open Lawn + Bio swale



Project: Zhulin Temple Landscape Design
Participant: Aaron Xiaohan Wang
Drawing: Site Analysis and Design Proposal

Model + Renders

Open Lawn + Bio swale



Project: Zhulin Temple Landscape Design

Participant: Aaron Xiaohan Wang

Drawing: Site Analysis and Design Proposal

Model + Renders

Carpark permeable paving



Project: Zhulin Temple Landscape Design

Participant: Aaron Xiaohan Wang

Drawing: Site Analysis and Design Proposal

Model + Renders

Strata tree pits + boulevard



Project: Zhulin Temple Landscape Design

Participant: Aaron Xiaohan Wang

Drawing: Site Analysis and Design Proposal

Foot bridge



Custom Shelter



Section A- A'



Project: Zhulin Temple Landscape Design
Participant: Aaron Xiaohan Wang
Drawing: Site Analysis and Design Proposal