

Zhulin Buddhist Association of South Australia Landscape Concept Competition

SIFEI LIU
January, 2021



- Embrace the native land
- Embrace the culture & spirit
- Embrace the inner peace



- Connect with the spirit
- Connect with the community
- Connect with nature & wider context



- Influence the generations to come
- Influence the community
- Influence people with different cultural background

Delivery a design approach which is

FEASIBLE

- Easy to construct & maintain
- Cost efficient
- Can be phased subject to timing & budget

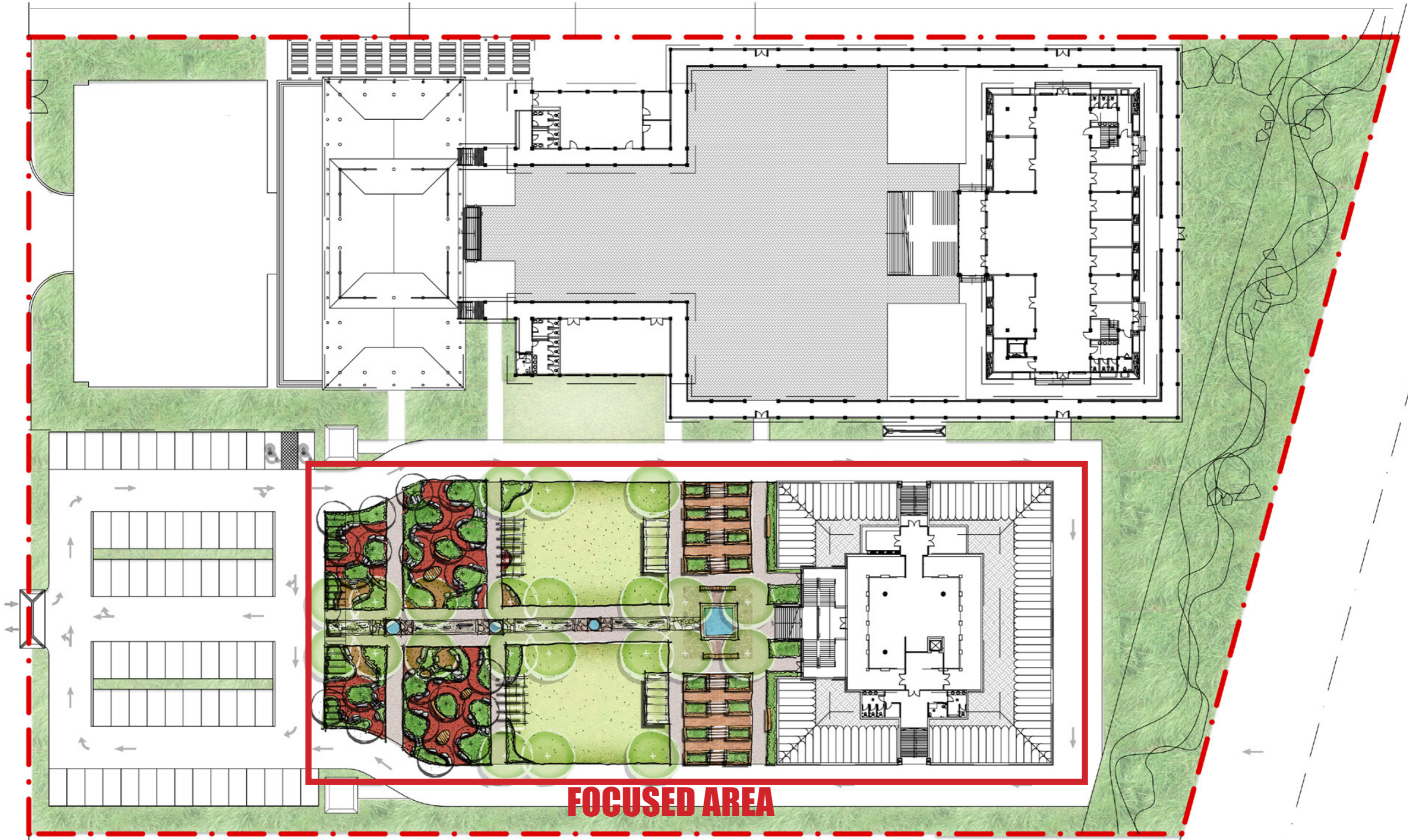
SUSTAINABLE

- Practice WSUD where possible
- Material adaptive reuse
- Choose Indigenous planting

FLEXIBLE

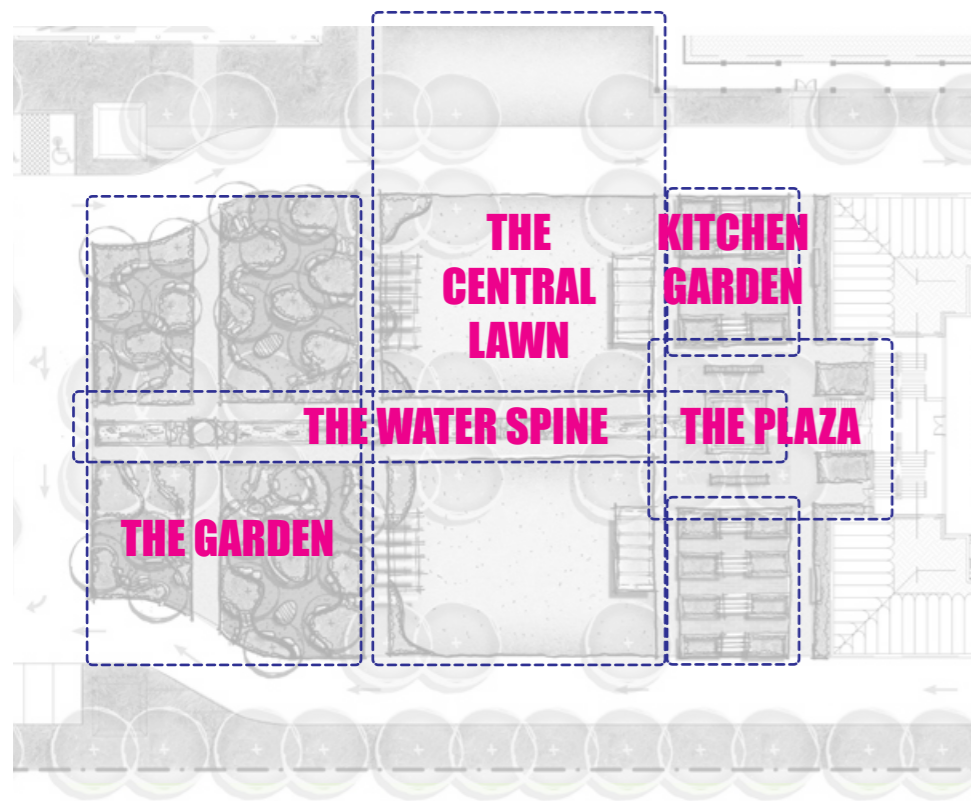
- Multi-functional space
- Welcoming & appealing to all
- For daily life users & visitors

Site Context

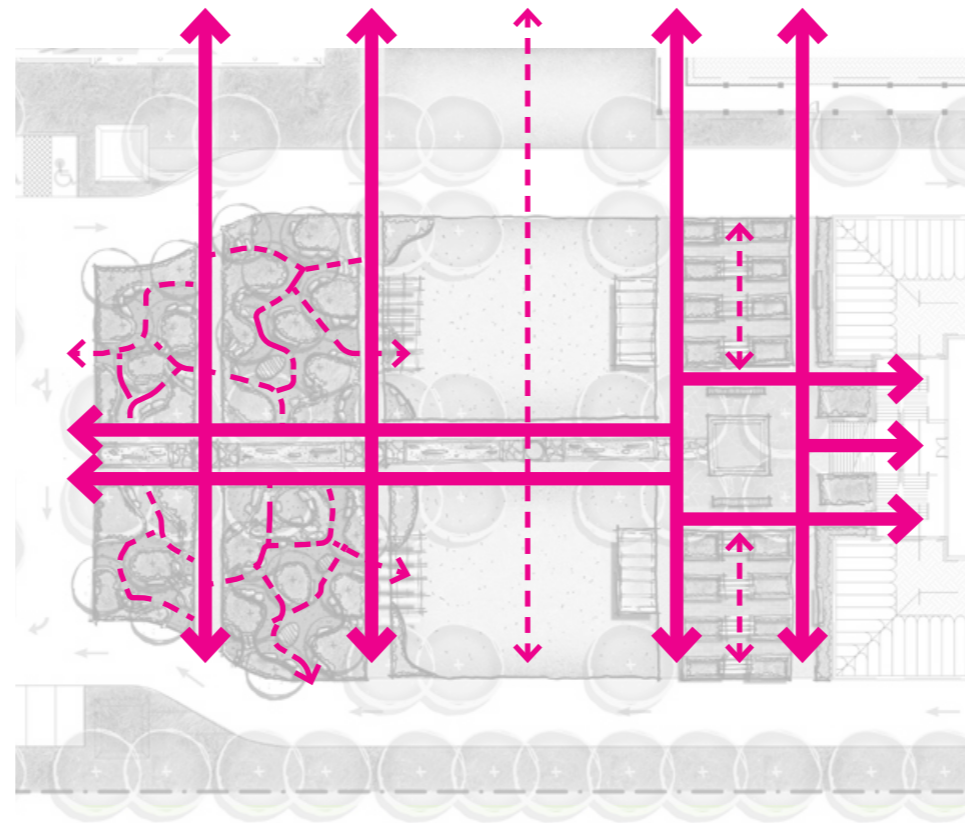


Experience and Spatial Analysis

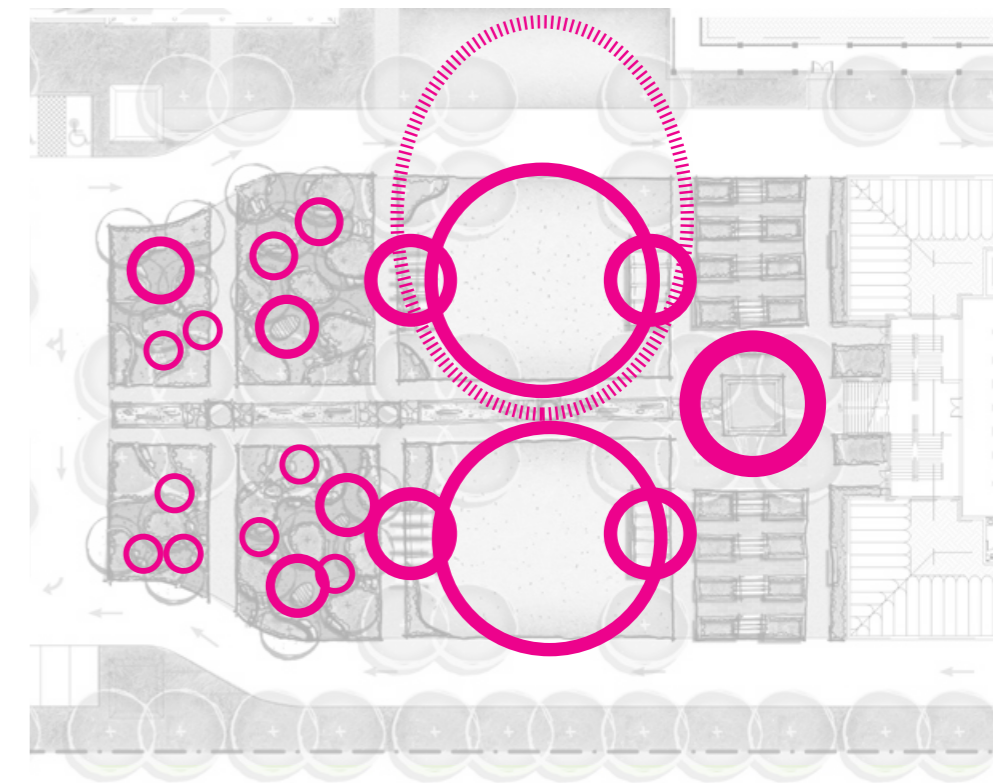
Programs & Zones



Circulation & Connections



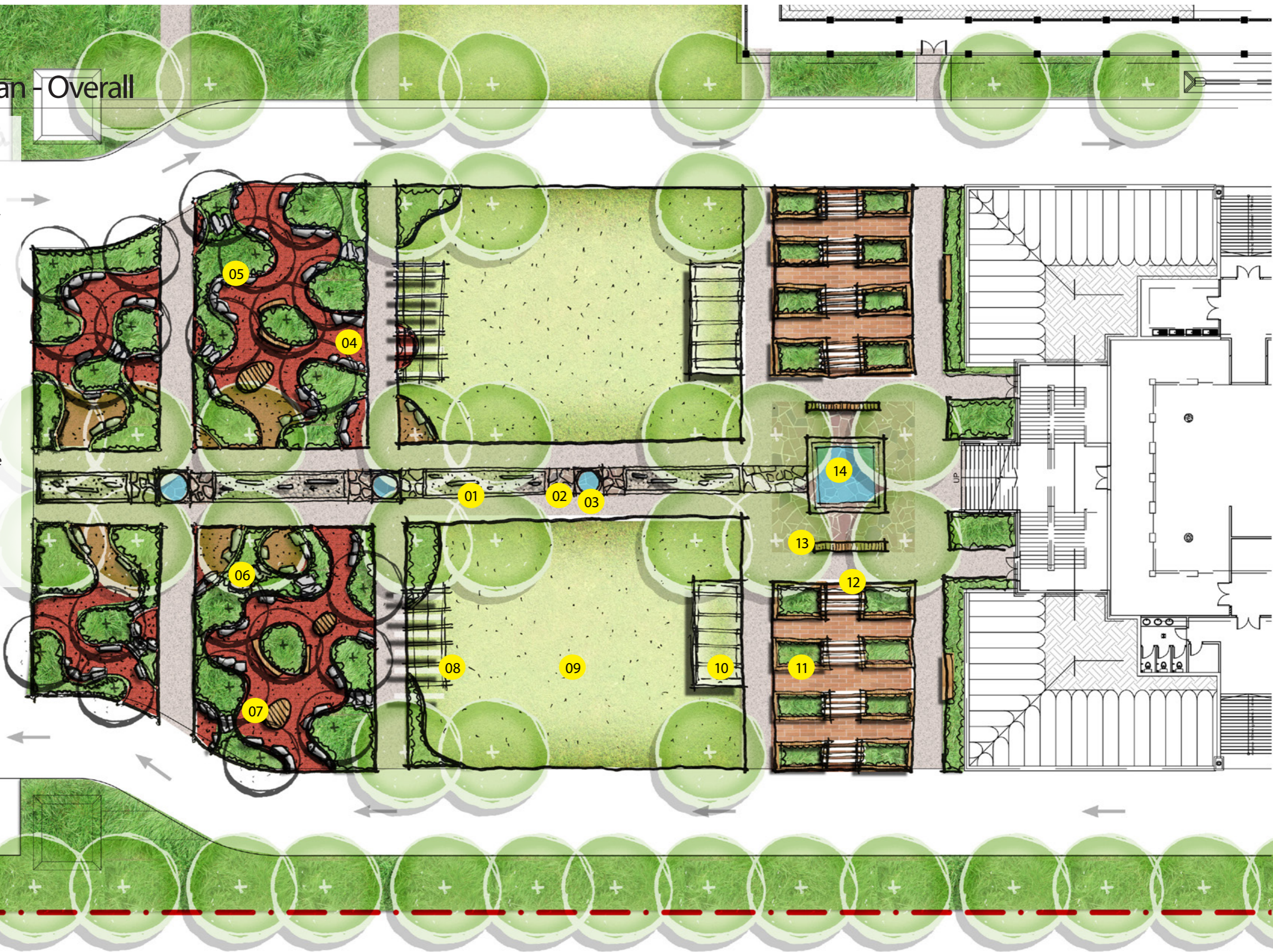
Variable Spaces



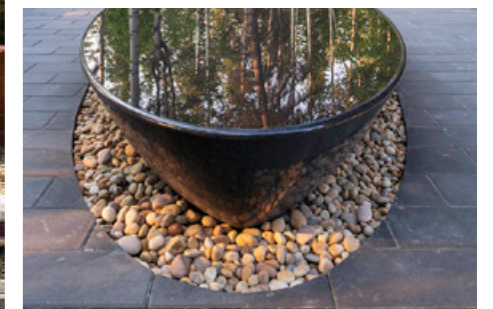
Landscape Plan - Overall

KEY

1. Gravel "water" garden with feature sliced rock "mound"
2. Crazy pave (recycled concrete) with gravel filling
3. Feature water bowl
4. Crushed recycled brick or red gravel
5. Rock/log seats
6. Stepping stone among indigenous planting
7. Timber deck
8. Pergola
9. Central Lawn
10. Shelter with communal long table
11. Kitchen garden raised planter with seating edge
12. Climber plants structure
13. Long communal bench
14. Reflective water mirror with sunken seating terrace

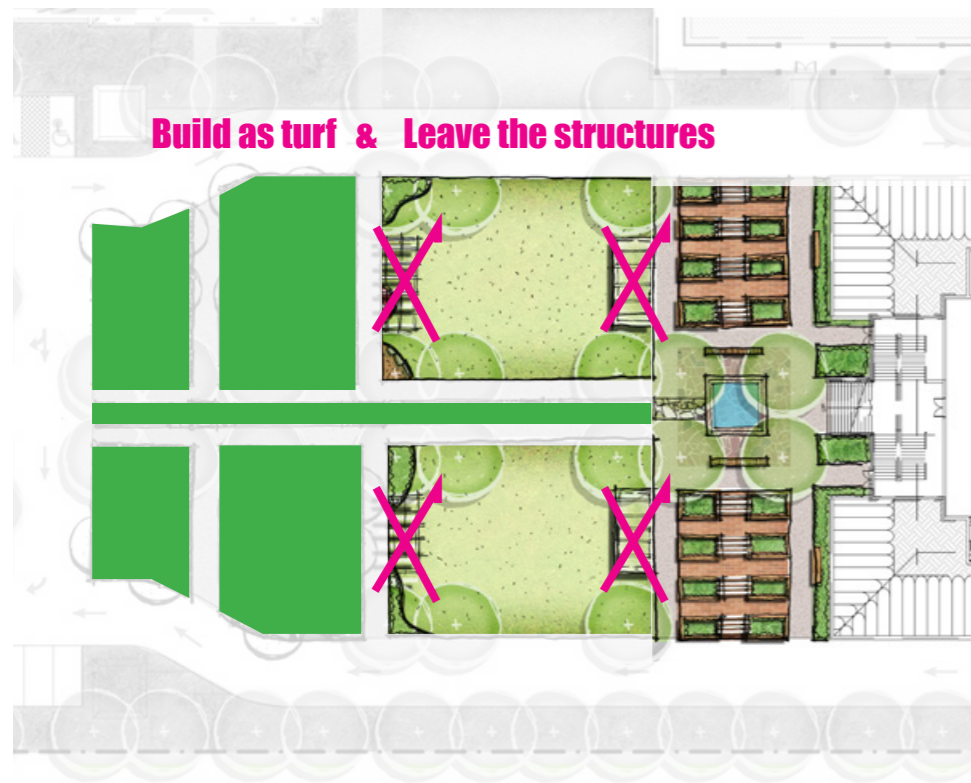


Precedent Images

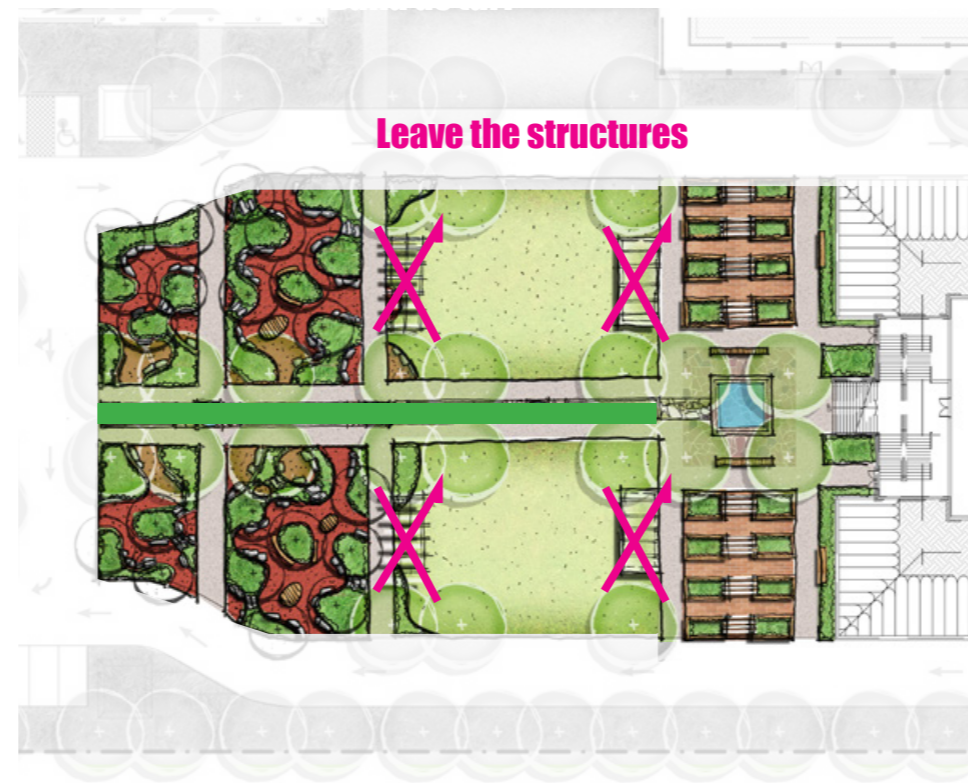


Phasing Strategy (subject to budge & timing)

PHASE 01



PHASE 02



PHASE 03

