

無.限 Infinity

鄧適朝 Shichao Deng | The University of Adelaide

School of Architecture and Built Environment



Zhulin Buddhist Association of South Australia

Location: 151 May Terrace, Ottoway SA 5013

SA Zhu Lin Buddhist Association was founded in 1991. Over the past decades, the temple has been providing holistic Buddhist education, meditation classes, facilitating individual spiritual and mental support for the South Australian community.

It is now under construction and there will be a space situated between the pagoda and the parking lot, where need to be designed as a "small oasis" so that any visitor who visits the temple with troubled minds are able to find a sense of peace and tranquillity when entering this area.

竹林寺 (Zhulin Buddhist Association of South Australia) 位於南澳大利亞州首府阿德萊德 (Adelaide) 北郊的Ottoway，距離阿德萊德市區約10公里車程，佔地約4公頃。

竹林寺是一座佛教寺院，也是南澳佛教協會所在地，擁有傳統中國風格的大門和雄偉的大雄寶殿，寺廟後院的舍利塔正在建造中。佛教信徒可以在此燒香拜佛，同時竹林寺每週日上午為社區兒童提供免費中文課和太極教程。

在目前的建設中，停車場和舍利塔之間有一片空地，需要設計一個景觀或者空間裝置，使得拜訪的人既能連接外部紅塵凡世，又能找到人們內心深處的彼岸。

Site Visit

勘察場地

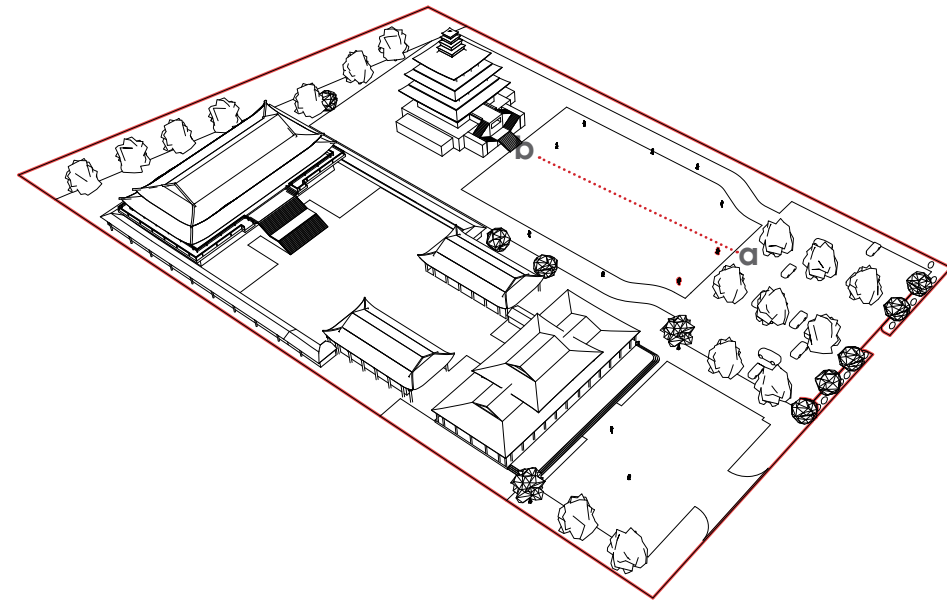
Location: 151 May Terrace, Ottoway SA 5013

南台靜坐一爐香，
終日凝然萬慮亡。
不是息心去妄想，
只緣無事可思量。



Design Concept

設計理念



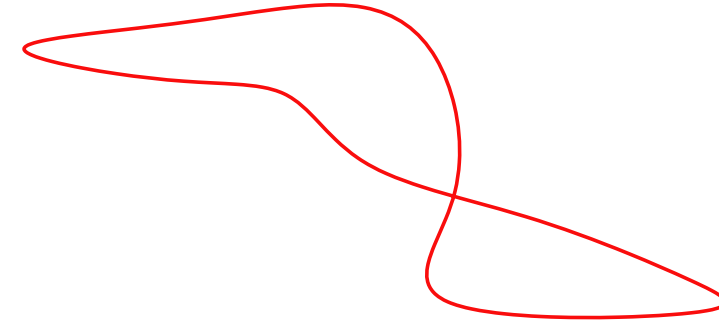
From a to b.
How?

從a點到b點的問題是，如何？



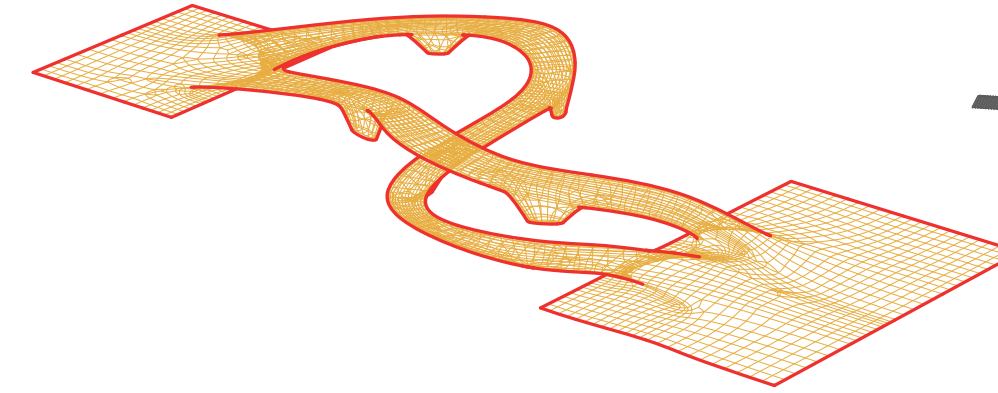
The Infinity symbol is a mathematical representing the concept of infinity and endlessness. Coincidentally, in Buddahism, the Knowledge of the Buddha is infinite. "space and creatures also are infinite. Space does not have boundary. Creatures in the universe cannot be counted."

設計上採用了數學中無限的符號來貼合佛教中無限，無量的宗教哲理。『地藏菩薩本願經』中，“法界無可限量。十方有無量世界；過去、未來時間皆無盡無限。佛、菩薩等聖眾，無可計數。天龍神鬼、六道眾生亦皆無數無盡。”由此法理作為本次的題眼，展開此次設計。



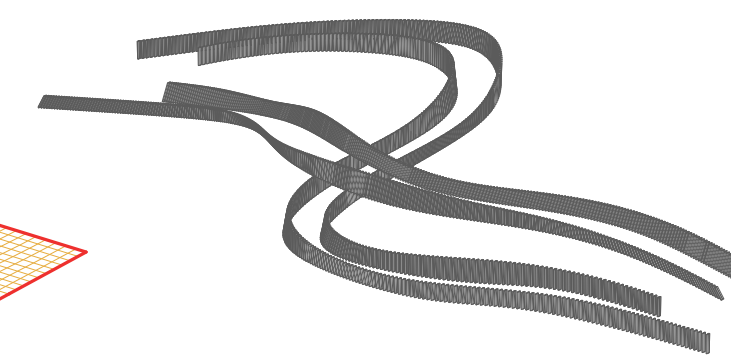
By abstracting the symbol into a end to end curve, the basic form of bridge has confirmed.

通過將無限的符號抽象化，得到一條首尾相連的曲線，作為橋的基本形態，從而進一步推進設計。



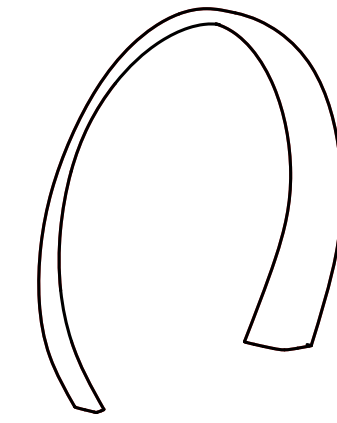
Transferring the curve into a bridge with 300mm deep pond underneath and inbetween, which connects between earthly world and heavn. The end to end form also indicates Reincarnation refer as "samsara" in Buddahism. Live to death, start to the end. The bridge material is cast-in-situ concrete.

由曲線獲得橋的最終形態，橋體由混凝土澆灌以及CNC技術加工製成，下方為300毫米深的無邊界許願池。首尾相連的橋，一邊連接著外部的紅塵凡世，另一端則連接著舍利塔指引人們找尋到內心深處的彼岸。



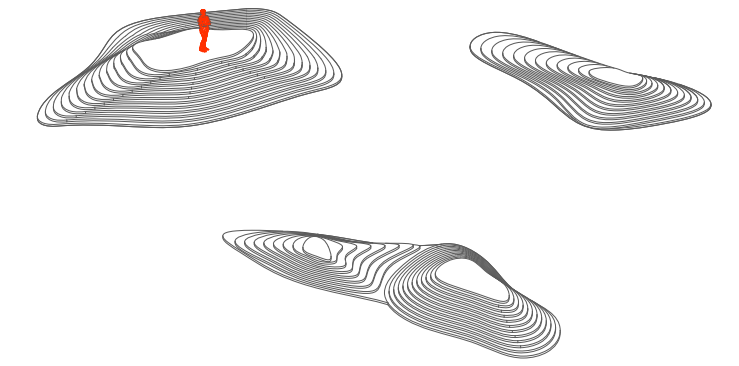
Tinted Glass rail with amber colour. Fully parametric flowing along the bridge.

琥珀色的玻璃扶手，採用全方位參數化技術，跟隨著橋的走向。



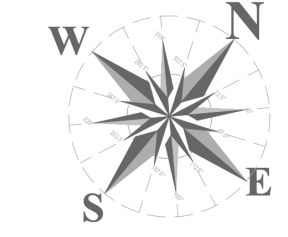
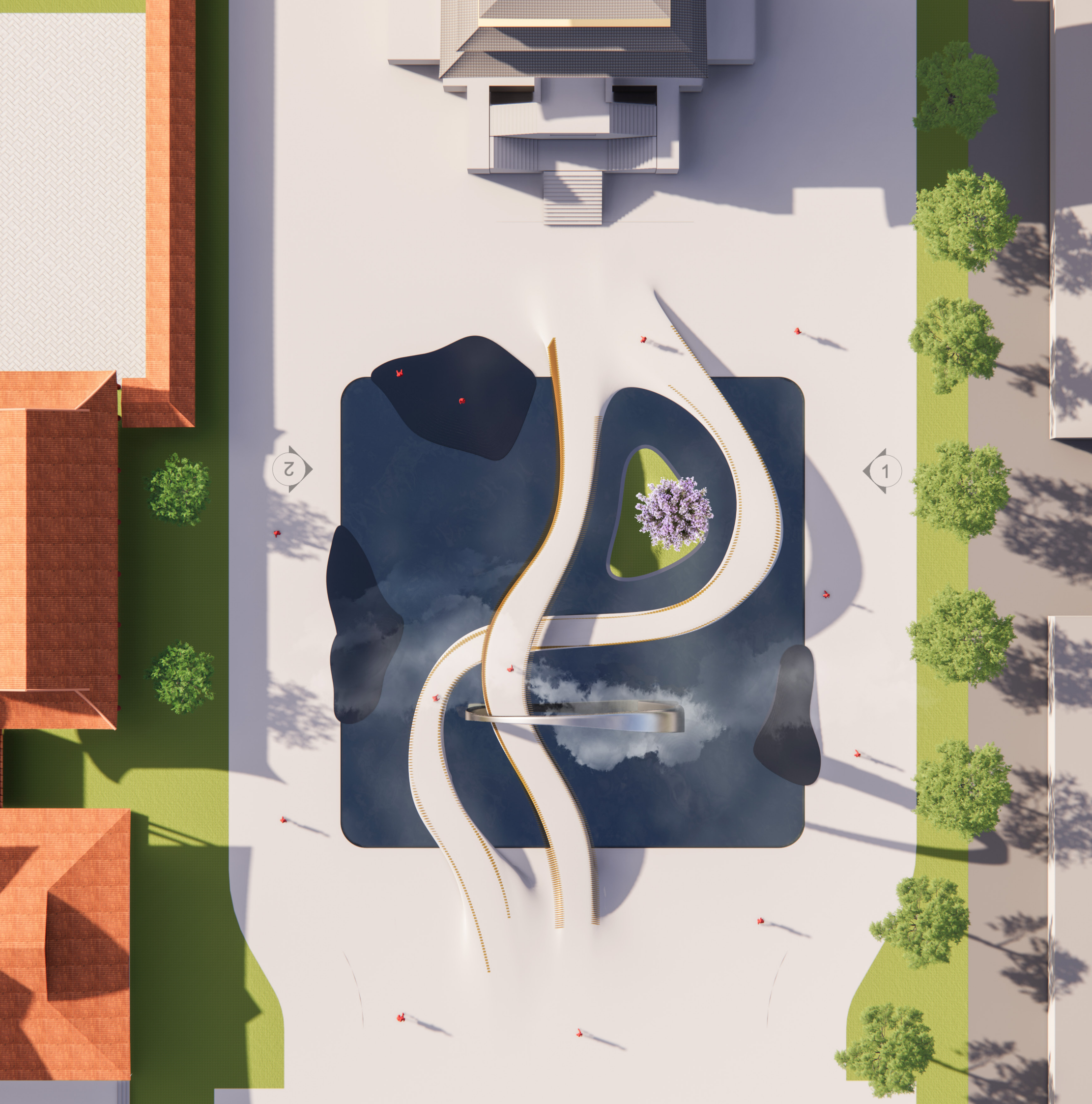
Aluminum Circular Arch with built-in Mist Maker establishing an invisible boundary between ordinary life and haven. The artificial mist blurred people's vision as well as the form of the bridge. The circular form in Buddhism representing completeness. Live long and prosper. Everthing is in the karmic realm.

鋁製圓形拱門矗立在橋的中央，通過內置霧化器打造了一個無形的結界，既模糊了建築的邊界，也模糊了人們的視覺感官。而圓在佛法中又釋為，世事輪迴，無始無終，生生不息，世界萬物都遵循著因果循環的法則。



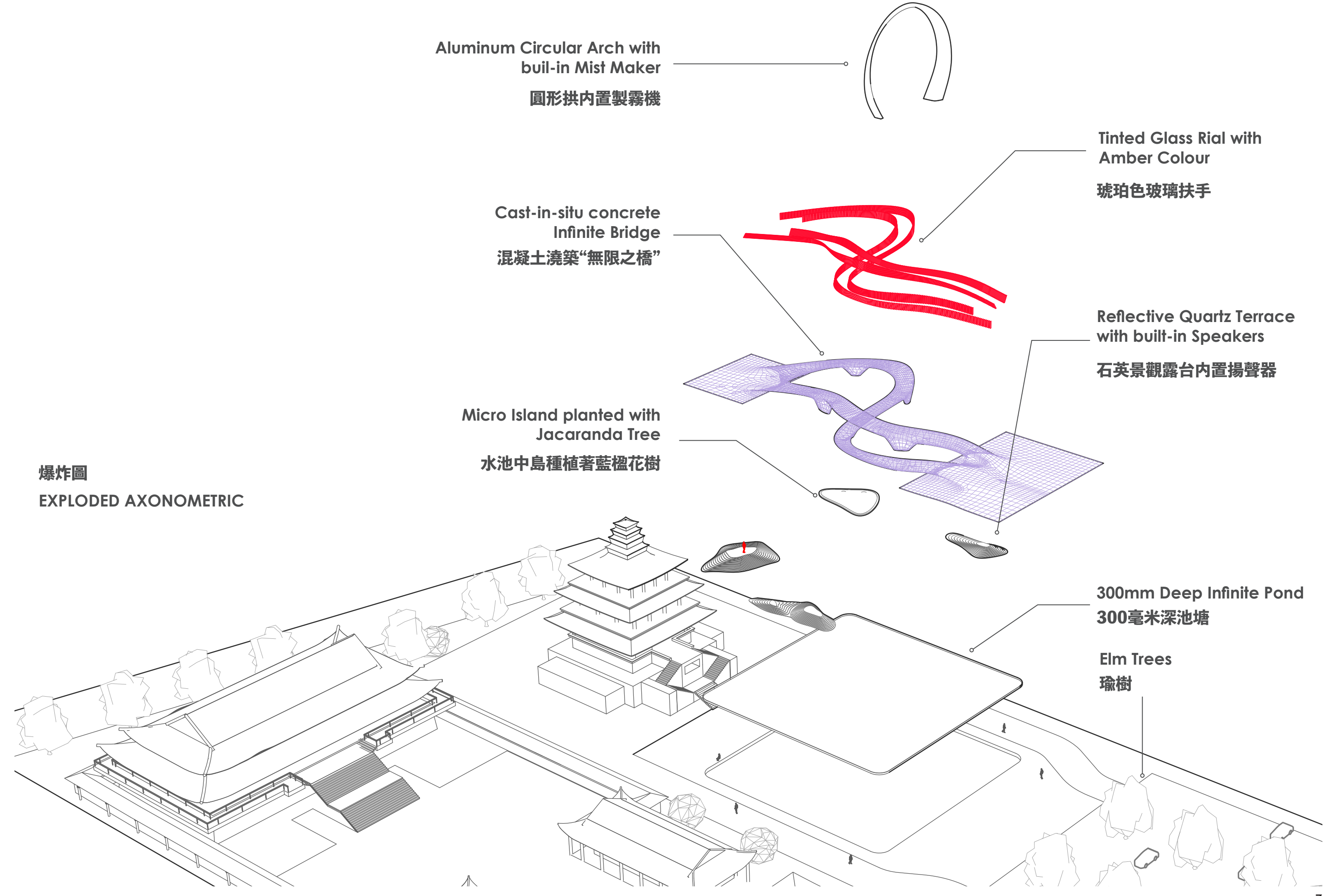
Reflective Quartz Terrace with built-in Speakers simulates the form of cloud, it plays Buddahism music in temple's daily life. This also adding a sense of peace and tranquillity (ZEN)

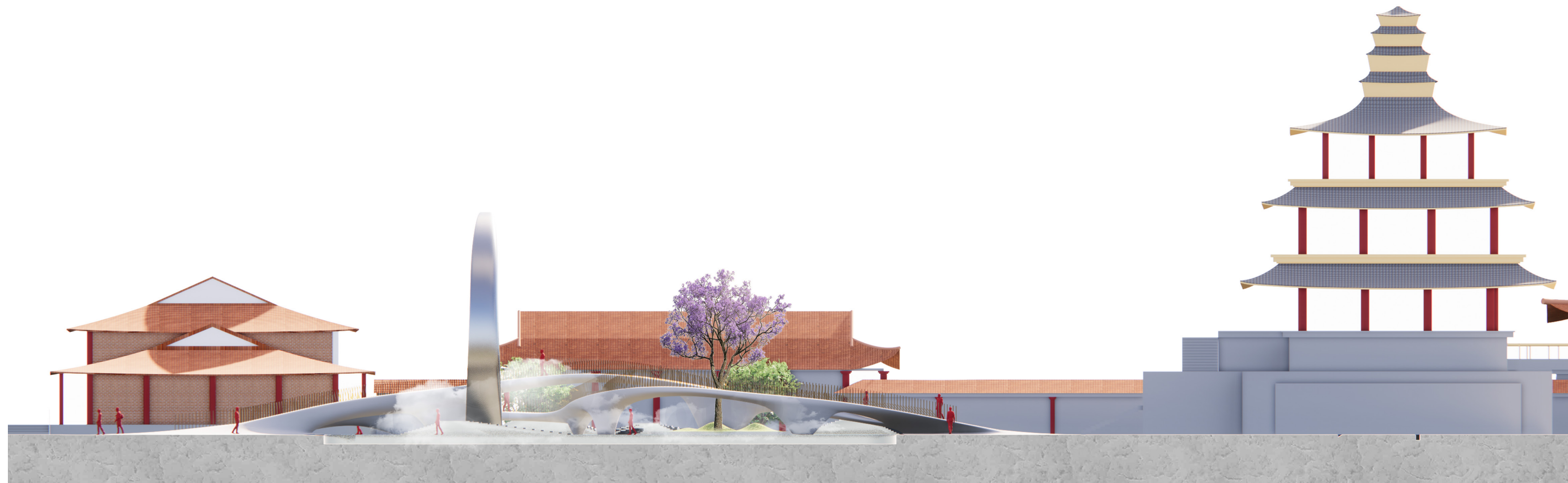
石英打造的小型觀景台，則是仿照了佛教中祥雲的圖案。立于水面之上，在橋上的人們仿佛行走於天上。內置的隱藏式揚聲器，可播放傳統的佛教寺廟禮樂，為整個空間增添了幾許祥和與禪意。



平面圖: 1:250
 PLAN
 SCALE : 1:250

爆炸圖
 EXPLODED AXONOMETRIC





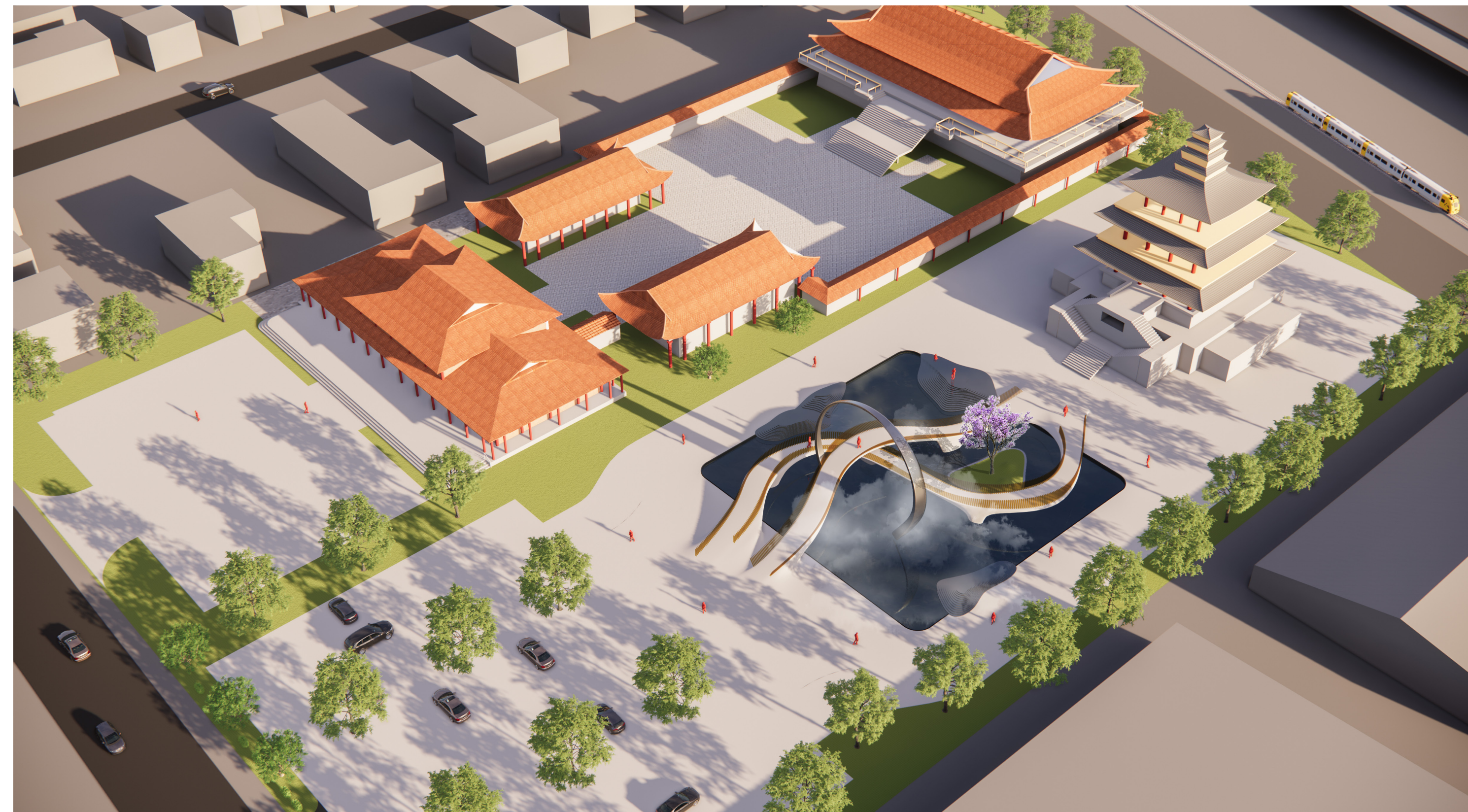
EIEVATION 1
SCALE : 1:250

立面 1- 1:250



EIEVATION 2
SCALE : 1:250

立面-2: 1:250



鳥瞰圖
AERIAL VIEW

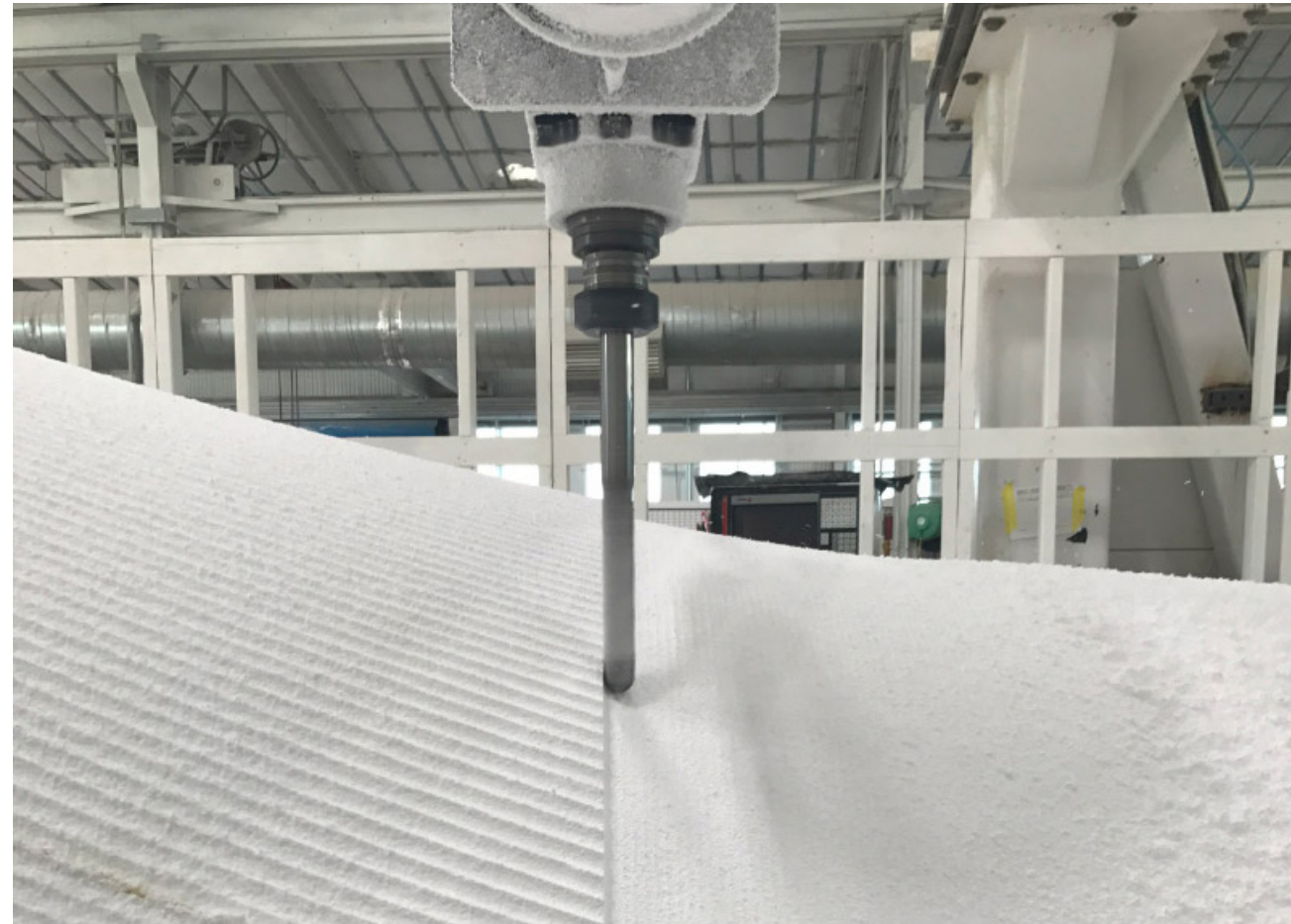
Construction Technique

建造工艺

Computer Numerical Control (CNC) + Concrete Cast in-situ

計算機數字化控制系統 + 混凝土澆築

Computer Numerical Control (CNC) CNC is the automated control of machining tools (such as drills, lathes, mills) and 3D printers by means of a computer. A CNC machine processes a piece of material (metal, plastic, wood, ceramic, or composite) to meet specifications by following a coded programmed instruction and without a manual operator directly controlling the machining operation.



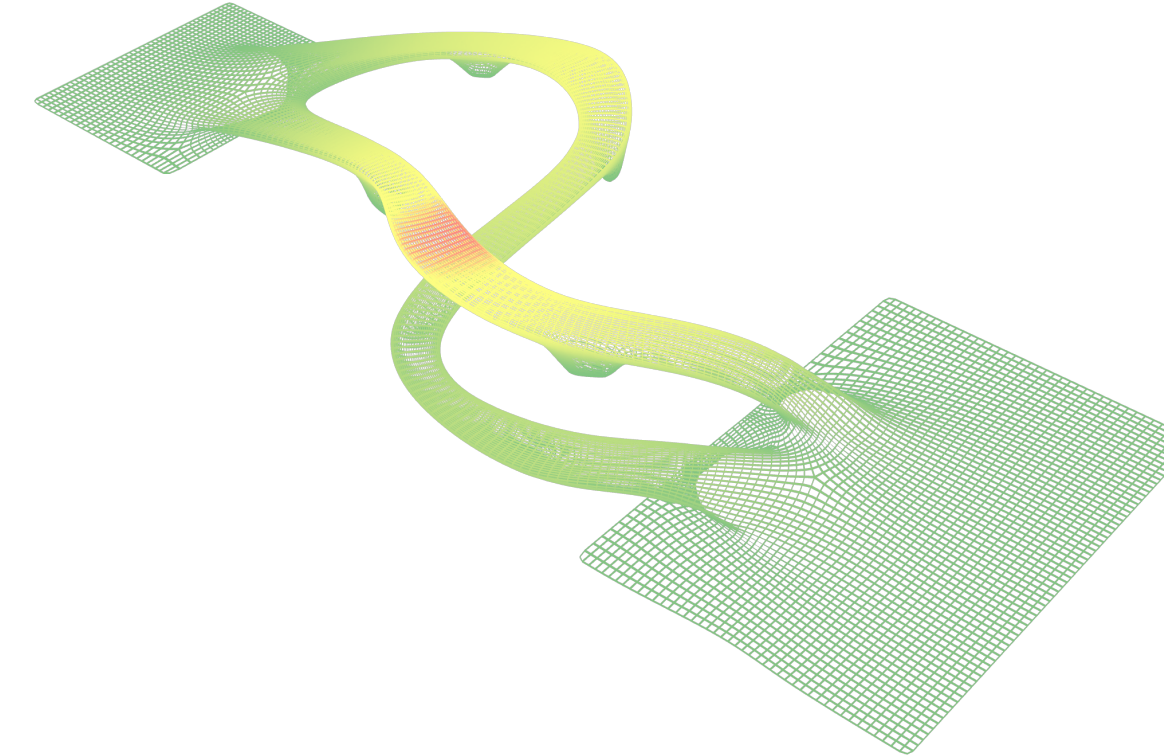
Cast in white concrete, using both a CNC and 3D printed model

項目主體可採用了CNC模板進行混凝土整體澆築，搭配使用局部3D打印模板進行澆築，可以解決複雜的曲面施工問題。



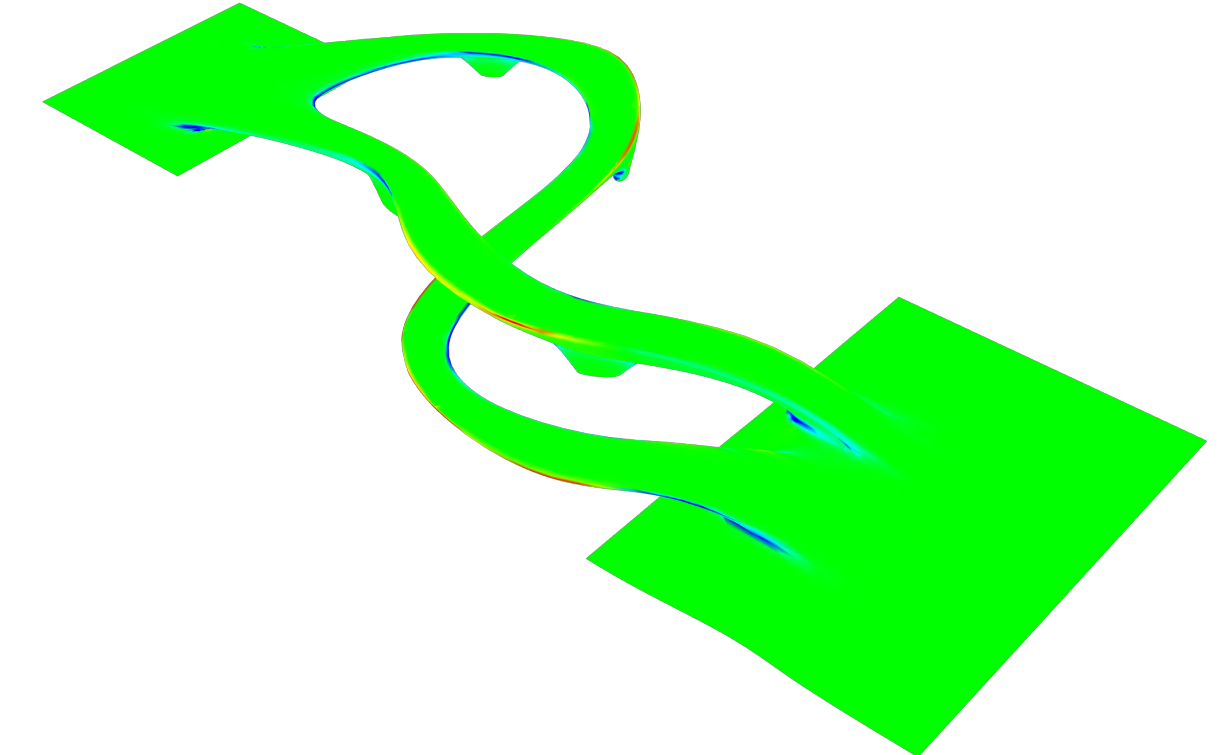
Basic Steel Structure Frame

結構主框架模擬



Structure Analysis

結構分析模擬

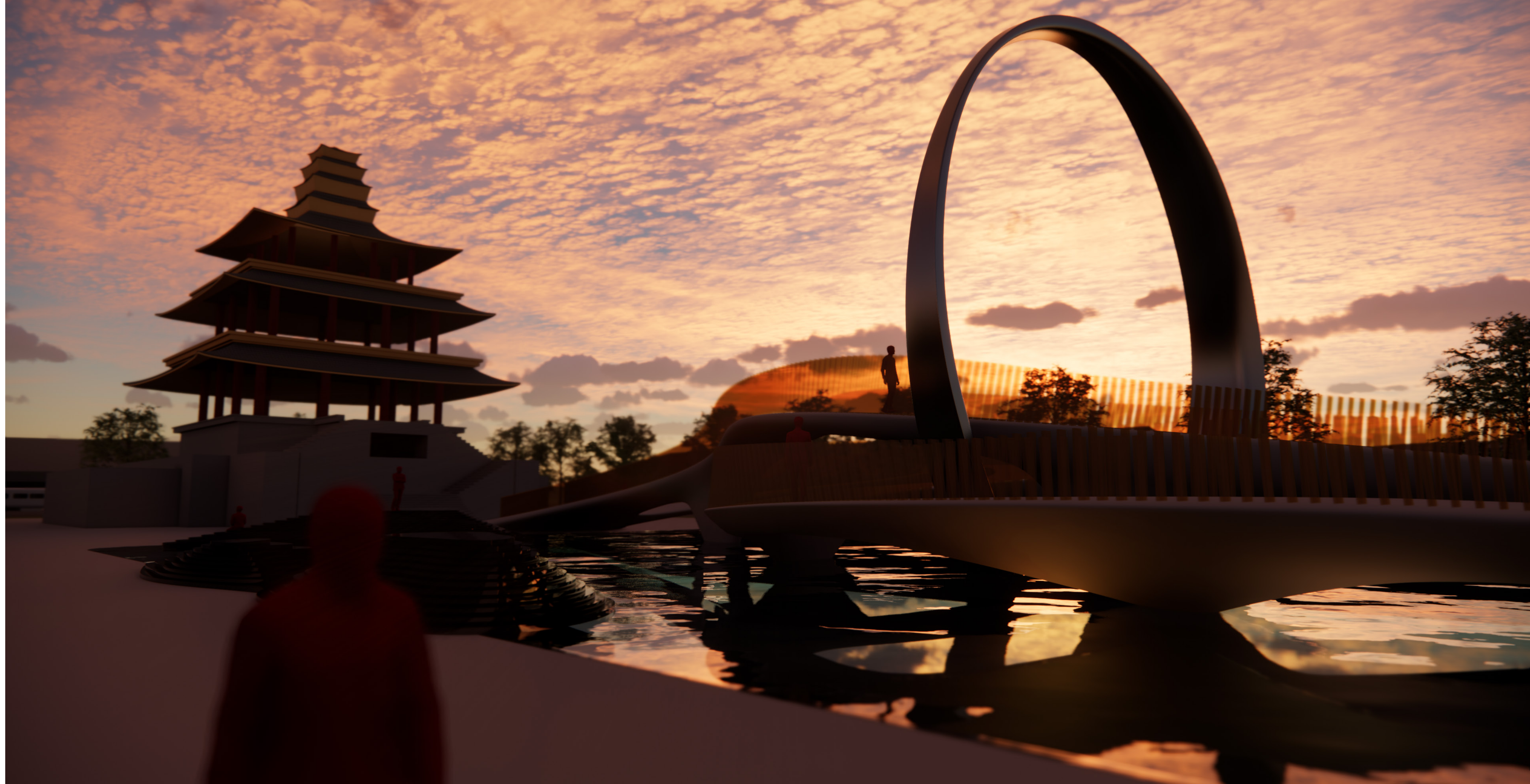
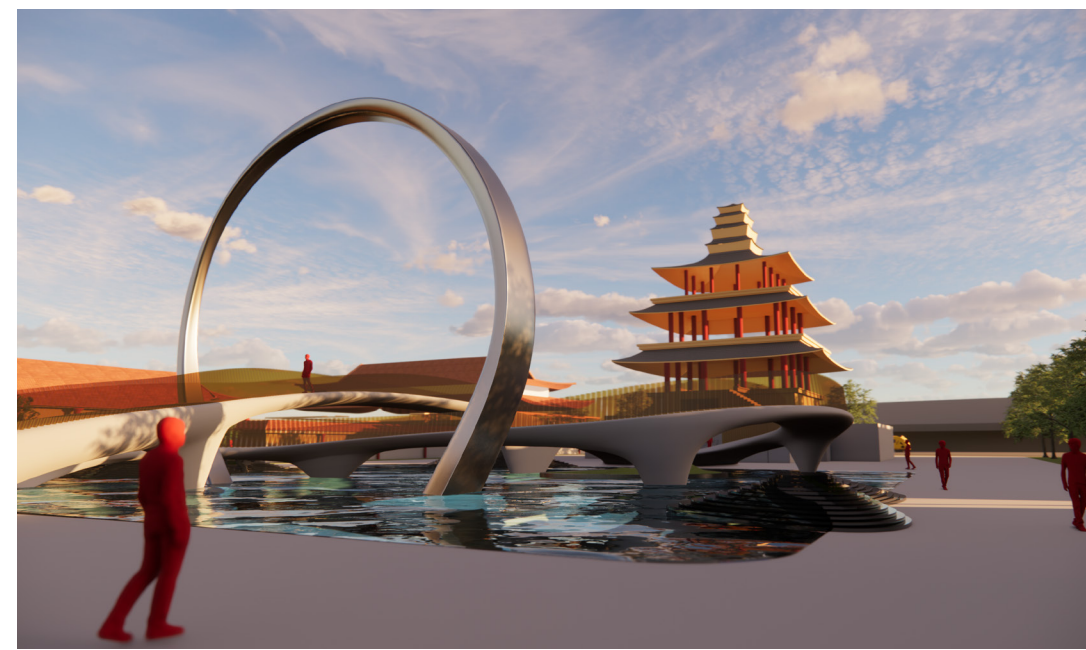
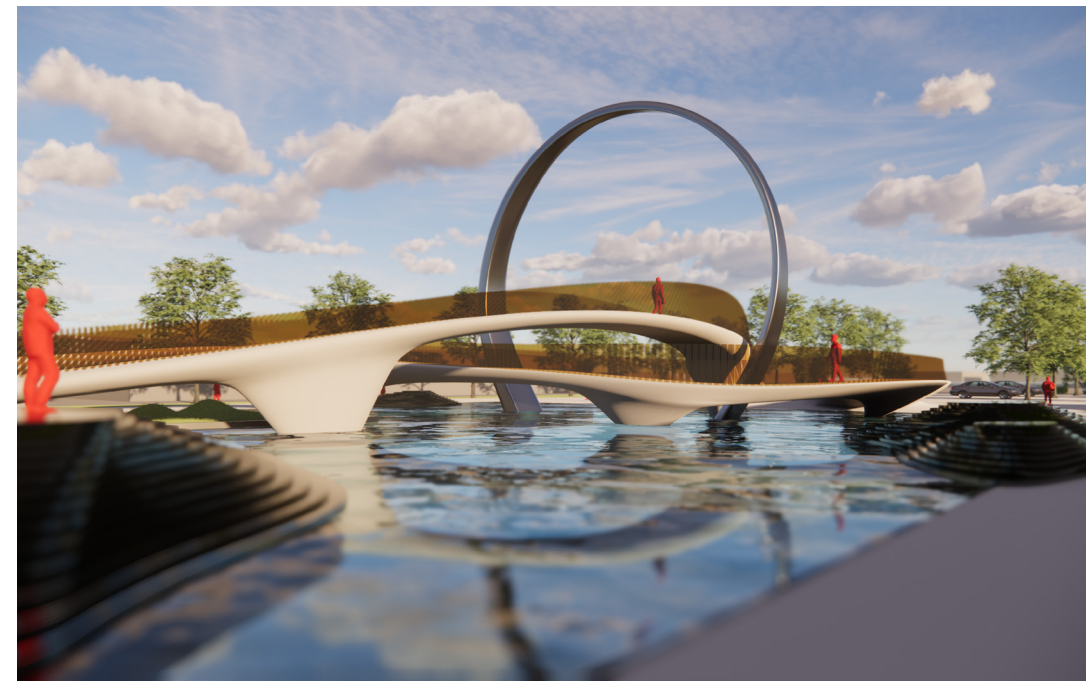


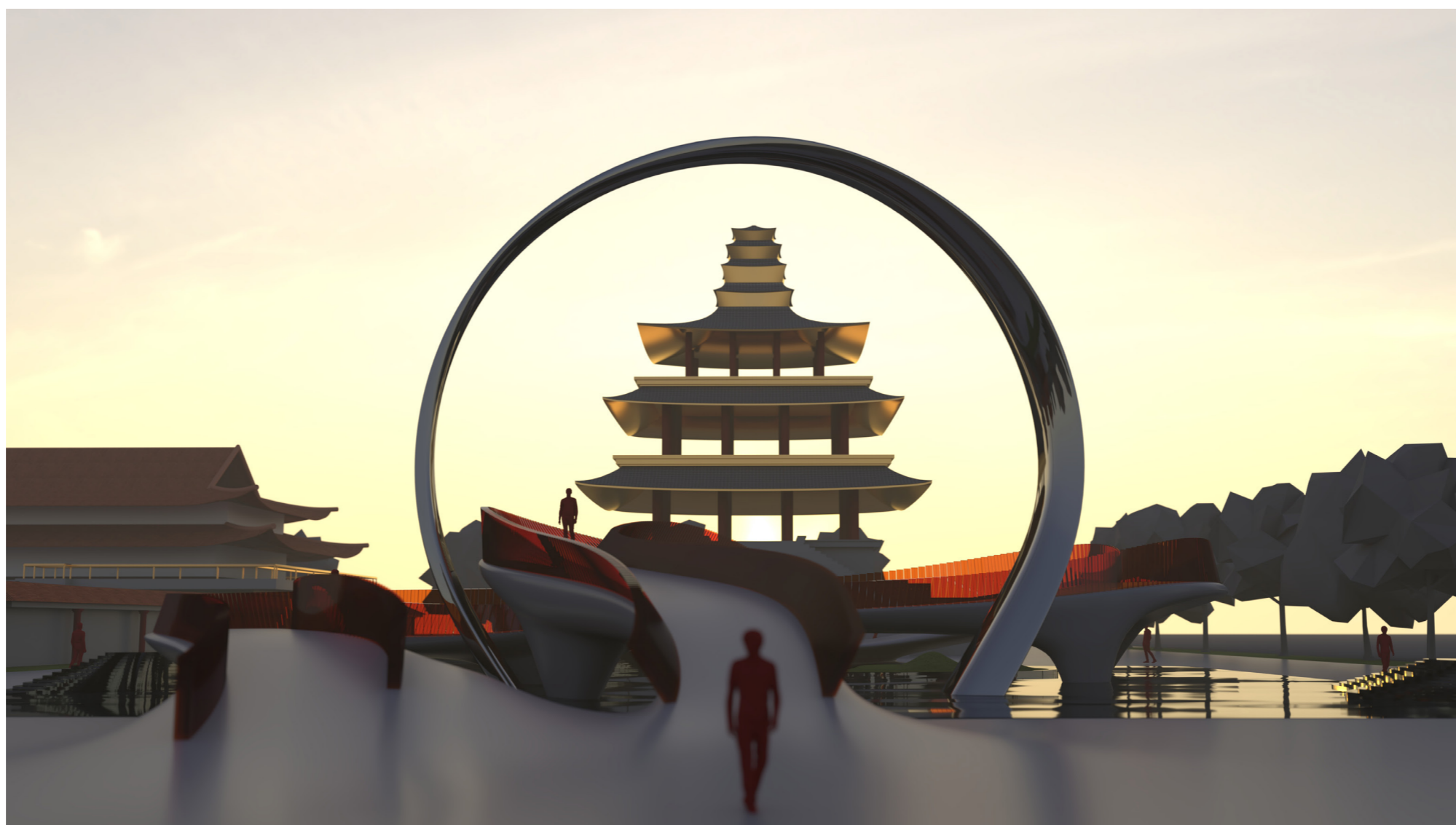
Curvature Analysis

曲率分析模擬



菩提本無樹，
明鏡亦非台，
本來無一物，
何處惹塵埃。





南無阿彌陀佛