

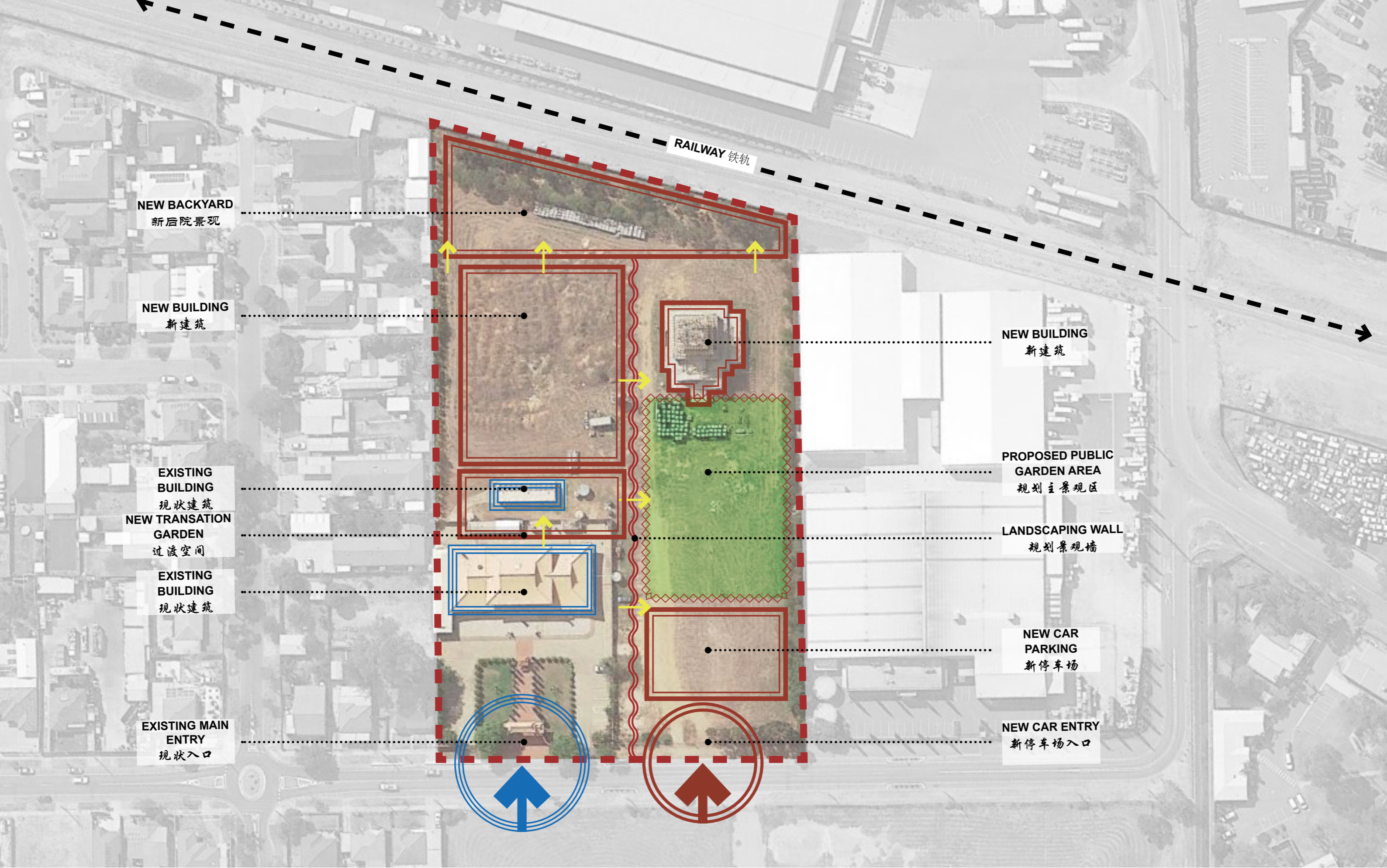
# THE SA ZHU-LIN BUDDHIST ASSOCIATION

## 竹林寺景观

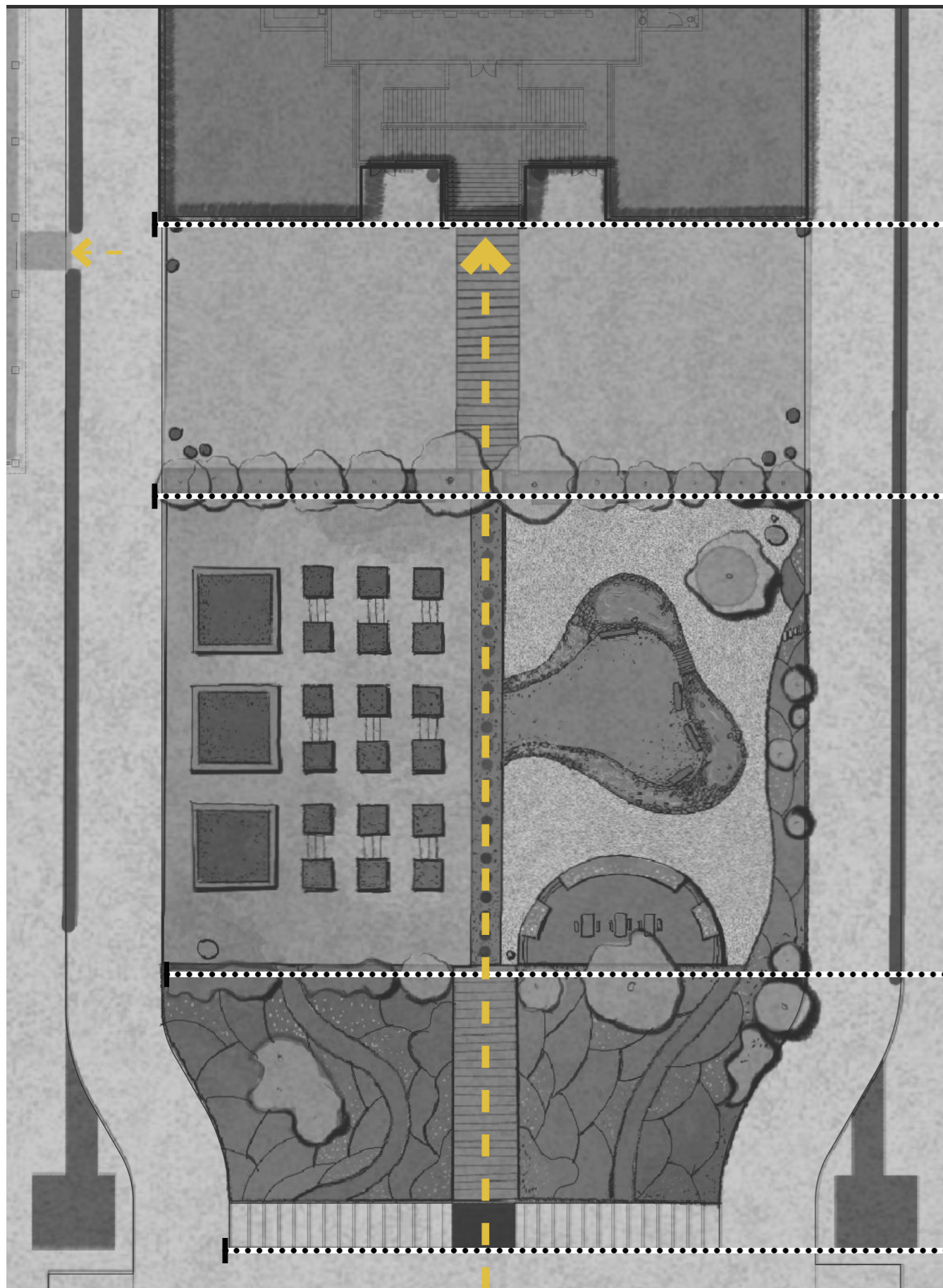




# SITE ANALYSIS/ 场地分析



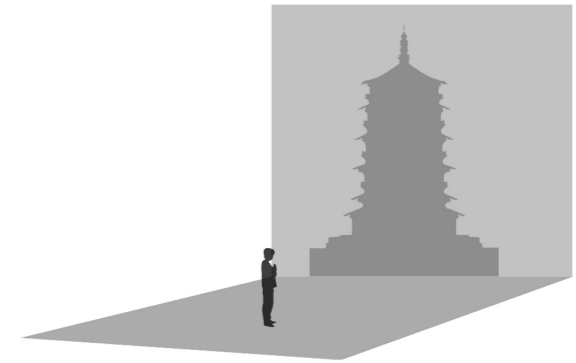
MASTER PLAN/ 总平面图



## RESPECT 敬

The space in front of the tower highlights the height of the tower. Plants mainly dot the square with low potted plants

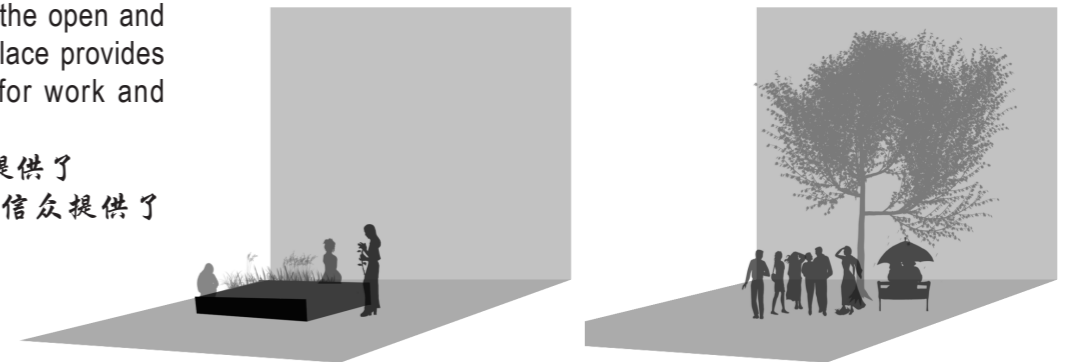
塔前场地以空旷烘托出塔的高度  
植物以低矮的盆栽为主点缀广场



## ACTIVITIES 动

One side is a vegetable and herbal planting pond, and the other side provides the open and comfortable landscape gathering place provides the believers with opportunities for work and communication.

一边是蔬草药种植池，一边提供了  
开阔舒适的景观集聚场地，给信众提供了  
劳作和沟通交流的机会

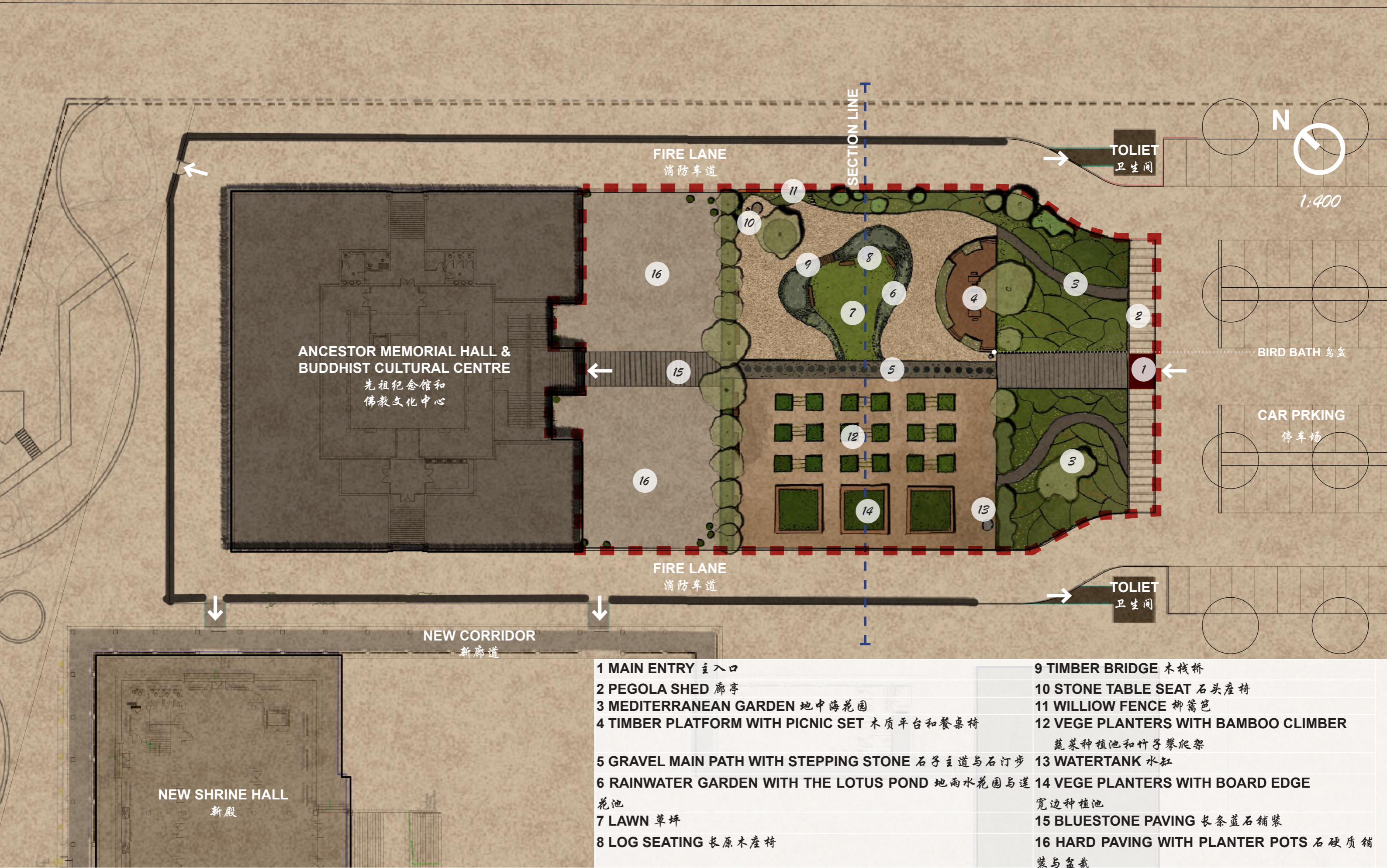


## SENSE OF PEACE 静

On one side, the first site entered from the parking lot provides a space for conversion from the hustle and bustle of the city into the Mediterranean garden. It makes people calm down quickly when entering.

一边从停车场进入的第一个场地，  
提供了一个转换的空间，从城市的喧嚣进  
入地中海花园。在进入时快速的让人沉静  
下来。





**CONCEPT PLAN/ 平面图**



ELEVATION/ 立面图

*Trachelospermum jasminoides*

*Viola odorata*

*Citrus limon 'Lisbon'*

*Liriope muscari*  
*'Just Right'*

*Pavonia hastata*

FLOWER BORDER 中轴线  
STOP AND APPRECIATE 强调塔

ENTRANCE/ 入口



ENTRANCE/ 入口观赏——静





**GATHERING SPACE/ 劳作区——动**



Banksia  
佛塔树

Magnolia 'Teddy Bear'  
玉兰

Gahnia filum

GABION WALL

Willow fence

**GATHERING SPACE/ 交流区——动**

Banksia  
佛塔树

Magnolia 'Teddy Bear'  
玉兰



ENTRANCE OF TOWER/ 礼佛活动区——敬



*Crabapple*



*Magnolia 'Teddy Bear'*



*Banksia marginata*



*Acacia salicina*



*Citrus limon 'Lisbon'*



*acokanthera oblongifolia*



*Lomandra*



*cyclamen hederifolium*



*Trachelospermum jasminoides*



*Lactuca sativa*



*Nandina 'Nana'*



*Viburnum*



*Rosmarinus officinalis*



*Solanum lycopersicum*



*Pittosporum*



*tulbaghia viola*



*Santolina rosmarinifolia*



*Pisum sativum*

# PLANTS/ 植物